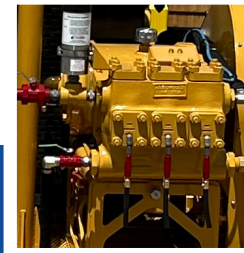
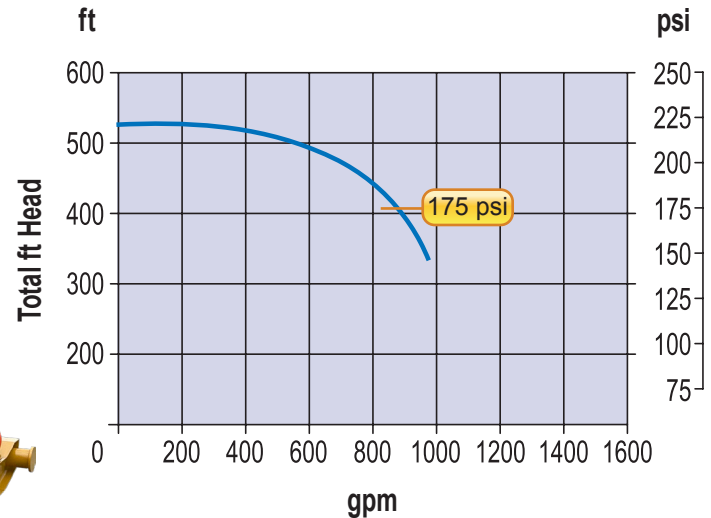


## HTU 500 HYDROSTATIC FILL AND TEST UNIT

*with Skid and Belt Driven Test Pump*

### Fill Pump Performance @ Maximum Rated HP



**High Pressure  
Triplex Pump**



**Operator's Control  
Station**

## FEATURES

**Ease of Operation** – the HTU is designed to fill and test pipelines using a single power source. The fill pump can output up to 600 gpm @ 500 ft of head, and the test pump output can go up to 3,205 psi @ 23 gpm.

**High Flow Centrifugal Fill Pump** with inlet suction strainer and a butterfly valve on the outlet to facilitate priming and flow regulation

**High Pressure Triplex Test Pump** with super-charged inlet and pulsation dampener for smooth operation

**High Pressure Check Valve** which allows automatic switchover function from fill to test

**Enclosed Diesel Engine Power Pack** with manual clutch engagement PTO

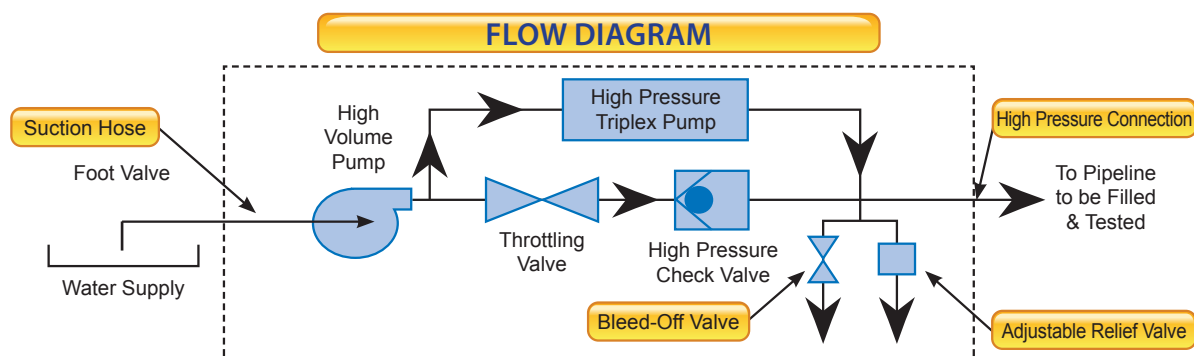
**Operator's Control Station** includes engine controls and a **Digital Stroke Counter** which displays the total pump strokes and stroke rate of the triplex pump

**On Board Lo/Hi Pressure Gauges** and adjustable relief valve

**Drain Valves** to release pressure and drain fluid from system

**Optional** 20ft suction hose with quick connect

# HTU 500 SPECIFICATIONS



## Engine

Type of Cooling	Liquid Cooled
Cylinders	4
Displacement	275 in <sup>3</sup> (4.5 l)
Maximum Rated Speed	2500 rpm (Set to 2,000 Maximum rpm)
Power Rating @ 2,500 rpm	170 hp (127 kW)
Maximum Torque @ 1,500 rpm	459 lbft (622 Nm)
Minimum Idle Speed	800 rpm
Specific Fuel Consumption (based on 2000 rpm with No. 2 diesel fuel)	0.373 lb/hph (227 g/kWh)
Voltage	12V
Mechanical Power Take-off, Heavy Duty	Manual

## Fill Pump

Type	Centrifugal, Multi Stage
Liquid	Water
Flow at Maximum Efficiency (NPSHR @ 8.2 ft)	800 gpm
Shut Off Head	525 ft

## Test Pump

Type	Triplex Plunger Pump
Plunger Size	1-1/4 in (31.7 mm)
Maximum Pressure	3,205 psi (221 bar)
Displacement Volume @ 420 rpm	23 gpm (89 lpm)
Minimum Allowable Speed	50 rpm
Maximum Continuous Speed	420 rpm
Maximum Intermittent Speed	460 rpm
Displacement	0.0558 US gpm/rpm (0.2112 lpm/rpm)
Displacement/Stroke	0.0186 US gpm/stroke

## Connections

Suction	6" x 150 lb Flange
Discharge	4" x 900 lb ANSI Flange

## Fuel

Type	Diesel
Capacity	75 gal (284 l)

## Shipping Weights

Skid Mounted Model	7,800 lb (3,537 kg)
--------------------	---------------------

## Overall Dimensions

Skid Mounted Model	96"Wx204"Lx80"H
--------------------	-----------------