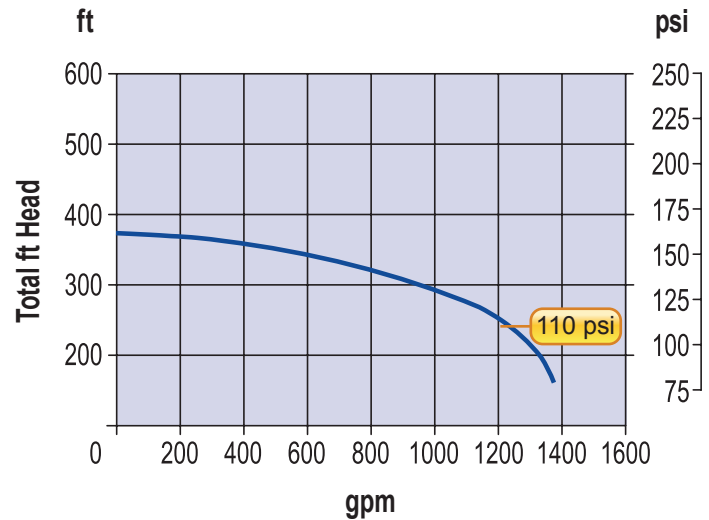


## HTU 350 HYDROSTATIC FILL AND TEST UNIT

with Belt Driven Test Pump

### Fill Pump Performance @ Maximum Rated HP



High Pressure  
Triplex Pump



Operator's Control  
Station



## FEATURES

**Ease of Operation** – the HTU is designed to fill and test pipelines using a single power source. The fill pump can output up to 600 gpm @ 350 ft of head, and the test pump output can go up to 3,205 psi @ 23 gpm.

**High Flow Centrifugal Fill Pump** with inlet suction strainer and a butterfly valve on the outlet to facilitate priming and flow regulation

**High Pressure Triplex Test Pump** with super-charged inlet and pulsation dampener for smooth operation

**High Pressure Check Valve** which allows automatic switchover function from fill to test

**Enclosed Diesel Engine Power Pack** with manual clutch engagement PTO

**Fully Equipped Tandem Axle Trailer** with leveling jacks and lifting lug

**Operator's Control Station** includes engine controls and a **Digital Stroke Counter** which displays the total pump strokes and stroke rate of the triplex pump

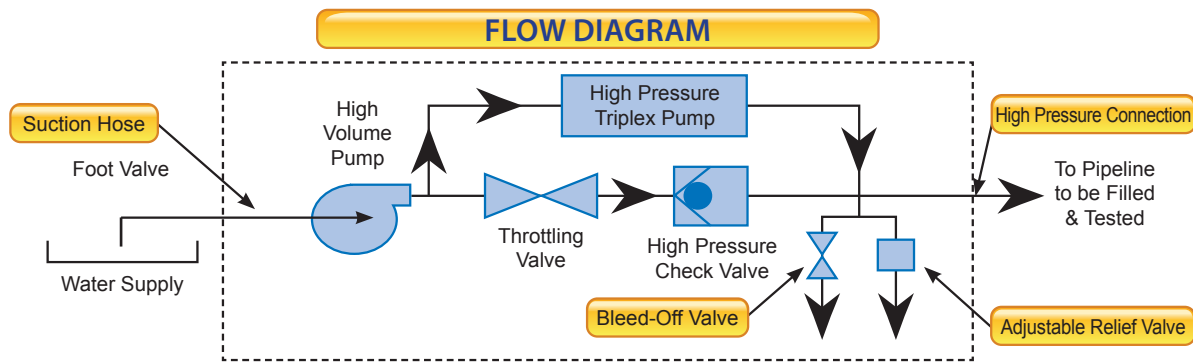
**On Board LO/HI Pressure Gauges** and adjustable relief valve

**Drain Valves** to release pressure and drain fluid from system

**Optional** 20ft suction hose with quick connect, and Tier 4 Engine

*\*Shown with optional hose.*

# HTU 350 SPECIFICATIONS



<b>Engine</b>	
Type of Cooling	Liquid Cooled
Cylinders	4
Displacement	275 in <sup>3</sup> (4.5 l)
Maximum Rated Speed	2500 rpm (Set to 2,000 Maximum rpm)
Power Rating @ 2,500 rpm	170 hp (127 kW)
Maximum Torque @ 1,500 rpm	459 lbft (622 Nm)
Minimum Idle Speed	800 rpm
Specific Fuel Consumption (based on 2000 rpm with No. 2 diesel fuel)	0.373 lb/hph (227 g/kWh)
Voltage	12V
Mechanical Power Take-off, Heavy Duty	Manual
<b>Fill Pump</b>	
Type	Centrifugal, Single Stage
Liquid	Water
Flow at Maximum Efficiency (NPSHR @ 8.2 ft)	1,100 gpm
Shut Off Head	350 ft
<b>Test Pump</b>	
Type	Triplex Plunger Pump
Plunger Size	1-1/4 in (31.7 mm)
Maximum Pressure	3,205 psi (221 bar)
Displacement Volume @ 420 rpm	23 gpm (89 lpm)
Minimum Allowable Speed	50 rpm
Maximum Continuous Speed	420 rpm
Maximum Intermittent Speed	460 rpm
Displacement	0.0558 US gpm/rpm (0.2112 lpm/rpm)
Displacement/Stroke	0.0186 US gpm/stroke
<b>Trailer</b>	
Type	10,000 lb Utility Trailer, Tandem Axle
Brakes	Electric on all Wheels
Wheels	6" x 15", 6-Hole, Single
Tires	ST225/75R 15 LR D
Ball Coupler	2-5/16" Adjustable
Safety Chains	(2) 5/16"x12" Long w/ Safety Hooks
Leveling Jacks	(2) 5K Side Winds, Swivel Type
Lights and Wiring	Running and Tail Lights with 7-Way RV Plug
Accessories	Spare Tire, ST225 Mounted on 15" Rim
<b>Connections</b>	
Suction	6" x 150 lb Flange
Discharge	4" x 900 lb ANSI Flange
<b>Fuel</b>	
Type	Diesel
Capacity	75 gal (284 l)
<b>Shipping Weights</b>	
Trailer Model	8,100 lb (3,674 kg)
Skid Mounted Model	7,800 lb (3,537 kg)
<b>Overall Dimensions</b>	
Trailer Model	96"Wx204"Lx98"H
Skid Mounted Model	96"Wx204"Lx80"H