



FEATURES

Three lever cable control or Multi-functional joystick controller allows simultaneous, precise control of the load and boom functions. The controls are easy to operate and require minimal operator training.

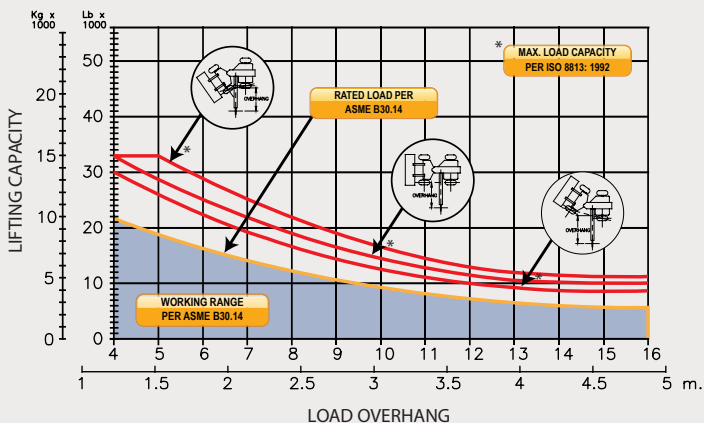
Telescopic boom engineered for exceptional support at maximum lift capacity and ease of transportation.

System employs tractor's existing hydraulic pump, filter and reservoir for convenience of OEM replacement parts and maintenance.

Sideboom attachment can be used in conjunction with tractor's original equipment.

Cab mounted axle lockout lever to stabilize load during boom operation.

LOAD RATING



SPECIFICATIONS

Load Capacity

Maximum Load Capacity at 4 ft Overhang	33,000 lb (14,969 kg)
Rated Load at 4 ft Overhang	21,450 lb (9,730 kg)
Maximum Working Load at 4 ft Overhang	20,600 lb (9,344 kg)

Winch

Load Winch	Planetary, Single Speed, Dual Brake System
Wire Rope Installed - Load Winch	75 ft (22.9 m)
Maximum Cable Capacity - Load Winch	368 ft (112 m)
Wire Rope	5/8" (16 mm), 6x36 EIPS, IWRC [41,200 lbs (18,688 kg) Minimum Breaking Strength]

Boom and Blocks

Telescopic Boom	10 ft (3 m) Retracted 16 ft (4.9 m) Extended
Load Line Parts	2
Typical Hook Speed	55 ft/min (16.8 m/min)

Hydraulic System

Directional Control Valve	3-Section, Open or Closed Center with Cable Controls
Operating Pressure	3,500 psi (241 bar)
Pump Output	70 gpm (265 lpm)

Weights

Removable Counterweight	4,000 lb (1,814 kg) each
Total Sideboom Attachment Weight	8,000 lb (3,628 kg)

SIDEBOOM ATTACHMENTS