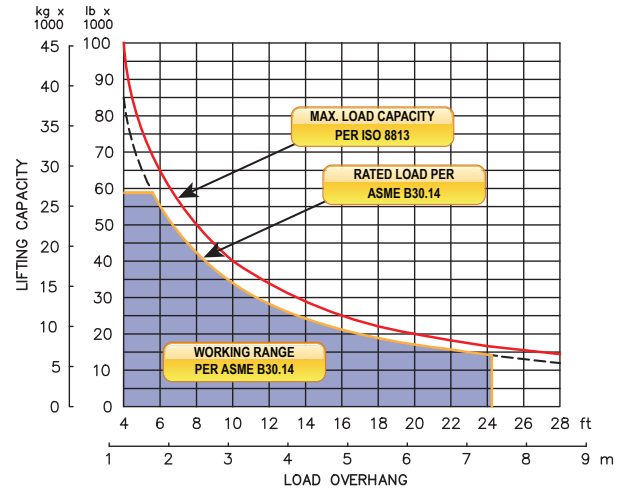


M100c on JD850L PL100



LOAD RATING



Improved Operator
Visibility



Sideboom Controls

FEATURES

Multi-functional joystick controller allows simultaneous, precise control of the load and boom functions with one hand. Built in electronic switches are used for counterweight and two-speed functions. The controls are easy to operate and require minimal operator training.

High capacity pipelayer winch package with high efficiency, two-speed piston motors.

Superb operator visibility due to new compact sideboom attachment design.

Hydraulically operated, four-bar linkage counterweight system adds maximum stability and lifting capability. Low, compact design provides balanced weight distribution for optimum operating control and excellent visibility.

Emergency free-fall function on load winch. Allows the operator to drop the load quickly in an emergency situation.

Electrohydraulic boom stop automatically prevents system over travel and damage to boom.

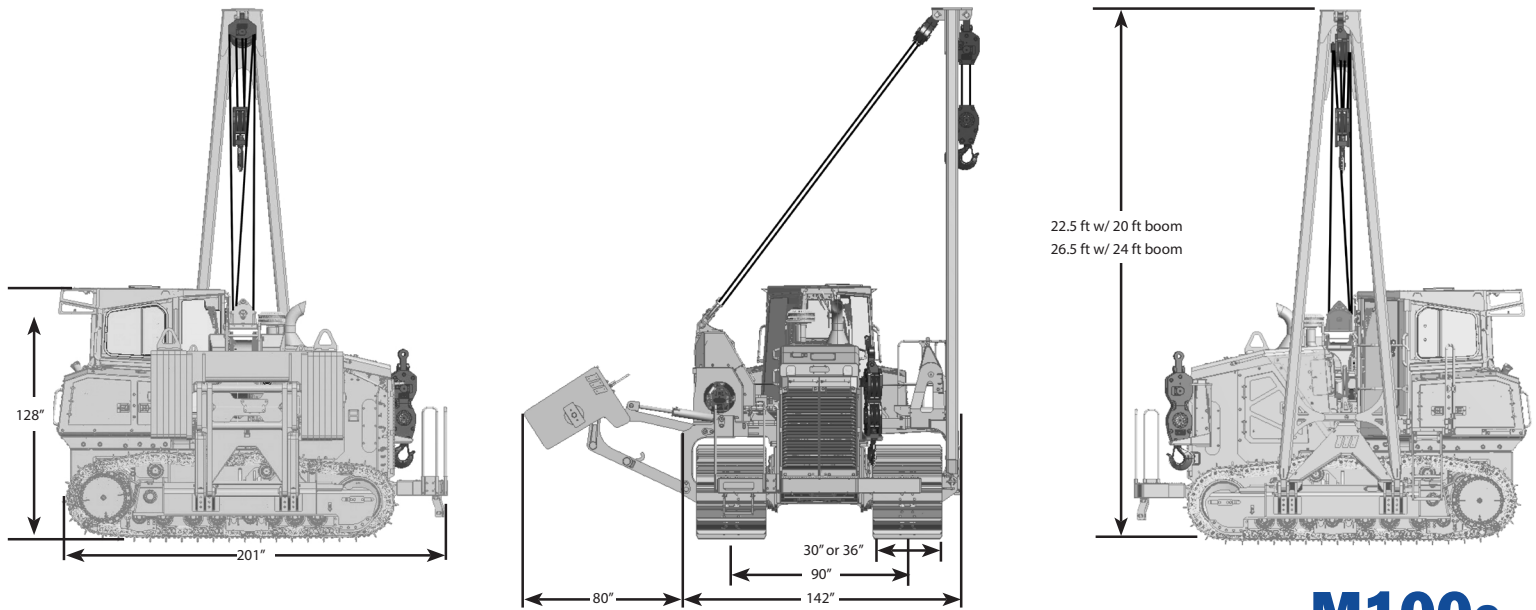
System ties into tractor's existing hydraulic system for convenience of OEM replacement parts and maintenance.

Tubular A-frame boom with quick release hinge pins for easy boom removal and maintenance.

Load Indicator System displays rated capacity, weight of the load on hook, load overhang and slope.

Optional boom lengths and Anti-2 Block System available.

SIDEBOOM ATTACHMENTS



M100c

on JD850L PL100

Load Capacity

Maximum Load at 4 ft Overhang	100,000 lb (45,359 kg)
Rated Load at 4 ft Overhang	85,000 lb (35,555 kg)
Maximum Working Load at 4 ft Overhang	58,800 lb (26,672 kg)

Boom and Blocks

Standard Boom	20 ft (6.1 m)
Boom Line Parts	4
Load Line Parts	4
Typical Hook Speed	95/50 ft/min (29/15 m/min)

Winches

Boom Winch	Planetary, Two-Speed, Dual Brake System
Load Winch	Planetary, Two-Speed, Dual Brake System, Free-Fall
Wire Rope Installed - Boom Winch	150 ft (45.7 m)
Maximum Cable Capacity - Boom Winch	423 ft (129 m)
Wire Rope Installed - Load Winch	170 ft (51.8 m)
Maximum Cable Capacity - Load Winch	423 ft (129 m)
Wire Rope - Boom & Load Line	3/4 in (19 mm), 6x36 EIPS, IWRC [58,800 lbs (26,671 kg) Minimum Breaking Strength]

Hydraulic System

Directional Control Valve	3-Section, Load Sense, Pressure Compensated w/ Electrohydraulic Controls
Operating Pressure	4,000 psi (275 bar)
Pump Output	76 gpm (288 lpm)

Weights

Removable Counterweight Segments	2 @ 5,510 lb (2,500 kg) each
Total Extendible Counterweight (Segments & Frame)	16,050 lb (7,280 kg)
Total Sideboom Attachment Weight	25,850 lb (11,725 kg)
Approximate Operating Weight	72,000 lb (32,658 kg)
Approx. Shipping Weight - Less Boom @ 2,200 lb (998 kg)	69,700 lb (31,615 kg)