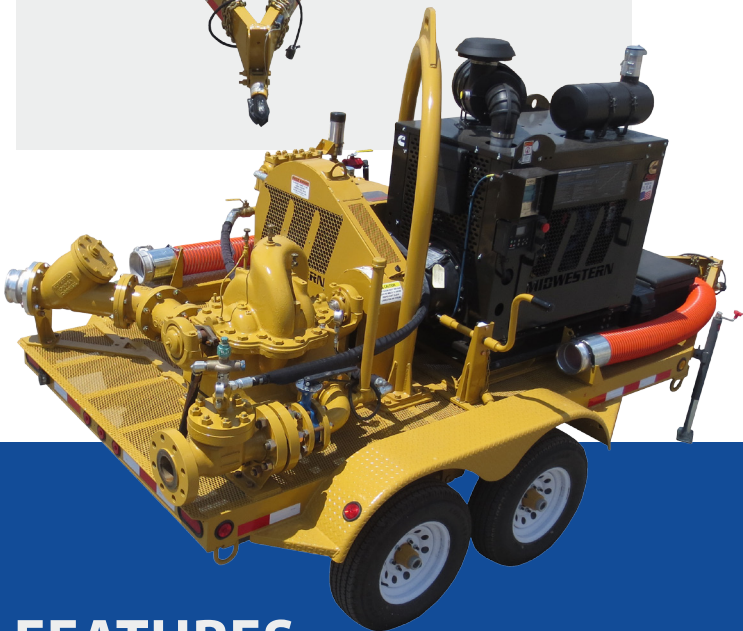
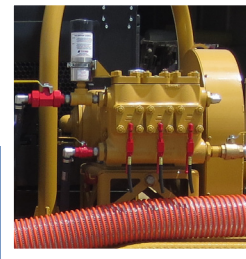
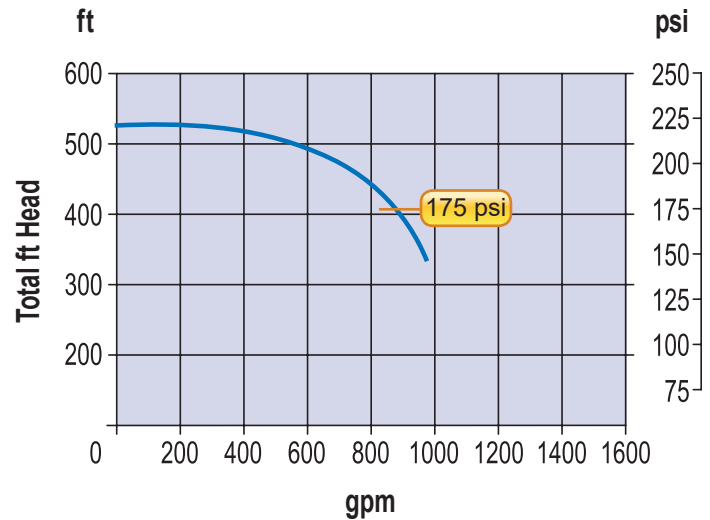


HTU 500

Hydrostatic Fill and Test Unit



Fill Pump Performance @ Maximum Rated HP



High Pressure Triplex Pump



Operator's Control Station

FEATURES

Ease of Operation – the HTU is designed to fill and test pipelines using a single power source. The fill pump can output up to 800 gpm @ 500 ft of head, and the test pump output can go up to 3,205 psi @ 23 gpm.

High Flow Centrifugal Fill Pump with inlet suction strainer and a butterfly valve on the outlet to facilitate priming and flow regulation

High Pressure Triplex Test Pump with super-charged inlet and pulsation dampener for smooth operation

High Pressure Check Valve which allows automatic switchover function from fill to test

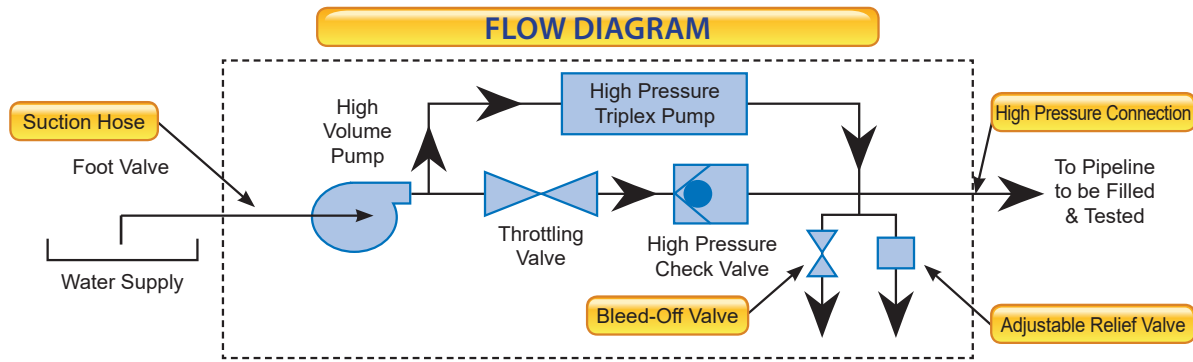
Enclosed Diesel Engine Power Pack with manual clutch engagement PTO

Fully Equipped Tandem Axle Trailer with leveling jacks and lifting lug

Operator's Control Station includes engine controls and gauge displays along with a **Digital Stroke Counter** which displays the total pump strokes and stroke rate of the triplex pump

Drain Valves to release pressure and drain fluid from system

20ft Suction Hose with quick connect



Engine	
Type of Cooling	Liquid Cooled
Cylinders	4
Displacement	275 in ³ (4.5 l)
Maximum Rated Speed	2500 rpm (Set to 2,000 Maximum rpm)
Power Rating @ 2,500 rpm	170 hp (127 kW)
Maximum Torque @ 1,500 rpm	459 lbft (622 Nm)
Minimum Idle Speed	800 rpm
Specific Fuel Consumption (based on 2000 rpm with No. 2 diesel fuel)	0.373 lb/hph (227 g/kWh)
Voltage	12V
Mechanical Power Take-off, Heavy Duty	Manual
Fill Pump	
Type	Centrifugal, Multi Stage
Liquid	Water
Flow at Maximum Efficiency (NPSHR @ 8.2 ft)	800 gpm
Shut Off Head	525 ft
Test Pump	
Type	Triplex Plunger Pump
Plunger Size	1-1/4 in (31.7 mm)
Maximum Pressure	3,205 psi (221 bar)
Displacement Volume @ 420 rpm	23 gpm (89 lpm)
Minimum Allowable Speed	50 rpm
Maximum Continuous Speed	420 rpm
Maximum Intermittent Speed	460 rpm
Displacement	0.0558 US gpm/rpm (0.2112 lpm/rpm)
Displacement/Stroke	0.0186 US gpm/stroke
Trailer	
Type	10,000 lb Utility Trailer, Tandem Axle
Brakes	Electric on all Wheels
Wheels	6" x 15", 6-Hole, Single
Tires	ST225/75R 15 LR D
Ball Coupler	2-5/16" Adjustable
Safety Chains	(2) 5/16"x12" Long w/ Safety Hooks
Leveling Jacks	(2) 5K Side Winds, Swivel Type
Lights and Wiring	Running and Tail Lights with 7-Way RV Plug
Accessories	Spare Tire, ST225 Mounted on 15" Rim
Connections	
Suction	6" x 150 lb Flange w/ 20 ft Long Suction Hose
Discharge	4" x 900 lb ANSI Flange
Fuel	
Type	Diesel
Capacity	75 gal (284 l)
Shipping Weights	
Trailer Model	8,100 lb (3,674 kg)
Skid Mounted Model	7,800 lb (3,537 kg)
Overall Dimensions	
Trailer Model	96"Wx204"Lx98"H
Skid Mounted Model	96"Wx204"Lx80"H