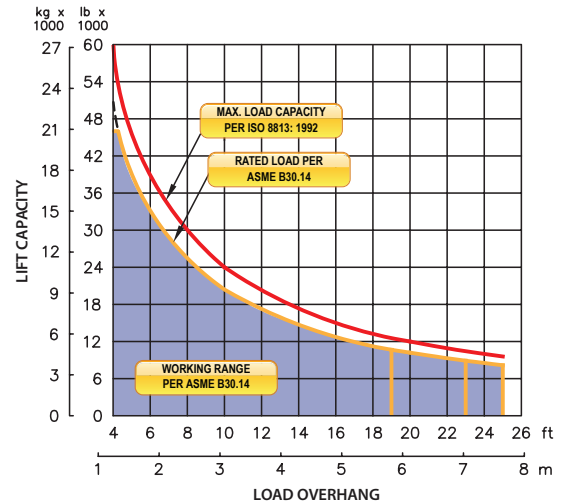


M560c

on JD750K LGP

LOAD RATING



Sideboom Controls

FEATURES

Three lever hydraulic control system allows simultaneous control of load and boom functions. The controls are easy to operate and require minimal operator training.

Hydraulic boom stop automatically prevents system over travel and damage to boom.

Hydraulically operated, four-bar linkage counterweight system adds maximum stability and lifting capability. Low, compact design provides balanced weight distribution for optimum operating control and excellent visibility.

Tubular A-frame boom with quick release hinge pins for easy boom removal and maintenance.

Viewing window allows full view of boom and blocks.

System employs tractor's existing hydraulic pump, filter and reservoir for convenience of OEM replacement parts and maintenance.

Optional Features:

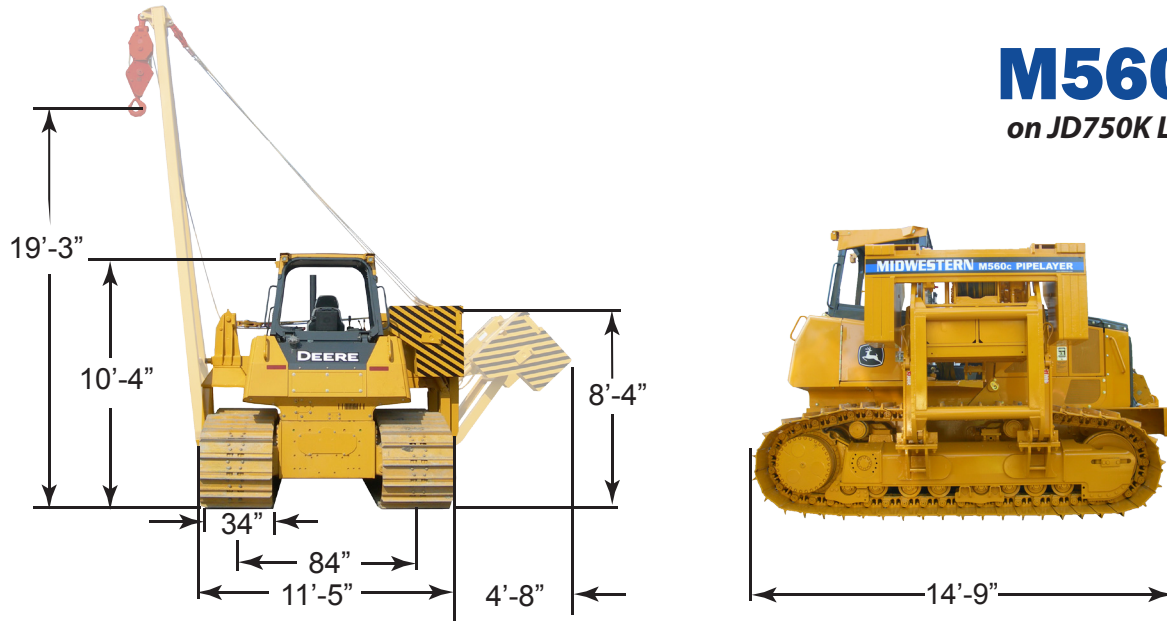
Boom lengths

Emergency free-fall function on load winch.

Front bumper that helps prevents damage to front of machine.

Load monitoring system

SIDEBOOM ATTACHMENTS



M560c

on JD750K LGP

Load Capacity

Maximum Load Capacity at 4 ft Overhang	60,000 lb (27,216 kg)
Rated Load at 4 ft Overhang	51,000 lb (23,133 kg)
Maximum Working Load at 4 ft Overhang	46,000 lb (20,865 kg)

Boom and Blocks

Standard Boom	20 ft (6.1 m)
Boom Line Parts	3
Load Line Parts	4
Typical Hook Speed	109/54 ft/min (33.2/16.5 m/min)

Winches

Boom Winch	Planetary, Single-Speed, Dual Brake System
Load Winch	Planetary, Two-Speed, Dual Brake System
Wire Rope Installed - Boom Winch	150 ft (45.7 m)
Maximum Cable Capacity - Boom Winch	368 ft (112 m)
Wire Rope Installed - Load Winch	160 ft (48.8 m)
Maximum Cable Capacity - Load Winch	423 ft (128.9 m)
Wire Rope - Boom Line	5/8 in (16 mm), 6x36 EIPS, IWRC [41,200 lbs (18,688 kg) Minimum Breaking Strength]
Wire Rope - Load Line	3/4 in (19 mm), 6x36 EIPS, IWRC [58,800 lbs (26,671 kg) Minimum Breaking Strength]

Hydraulic System

Directional Control Valve	3-Section, Open Center with Manual Levers
Operating Pressure	3,625psi (250 bar)
Pump Output	38 gpm (144 lpm)

Weights

Removable Counterweight Segments	6 @ 896 lb (406 kg) each
Total Extendible Counterweight (Segments & Frame)	8,200lb (3,719 kg)
Total Sideboom Attachment Weight	16,500 lb (7,484 kg)
Approximate Operating Weight	47,700 lb (21,636 kg)
Approximate Shipping Weight - Less Boom	46,500 lb (21,092 kg)