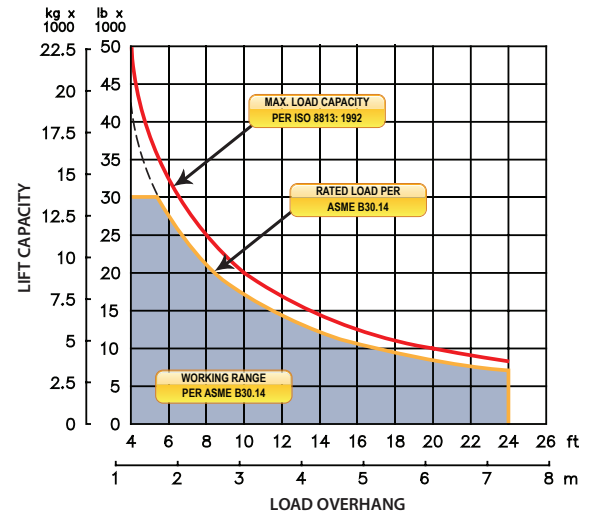


M550ch

on CAT D6M LGP

LOAD RATING



Sideboom Controls

FEATURES

Three lever hydraulic control allows simultaneous, precise control of the load and boom functions. The controls are easy to operate and require minimal operator training.

Hydraulic boom stop automatically prevents system over travel and damage to boom.

Hydraulically operated, counterweight system adds maximum stability and lifting capability. Low, compact design provides balanced weight distribution for optimum operating control and excellent visibility.

System employs tractor's existing hydraulic pump, filter and reservoir for convenience of OEM replacement parts and maintenance.

Tubular A-frame boom with quick release hinge pins for easy boom removal and maintenance.

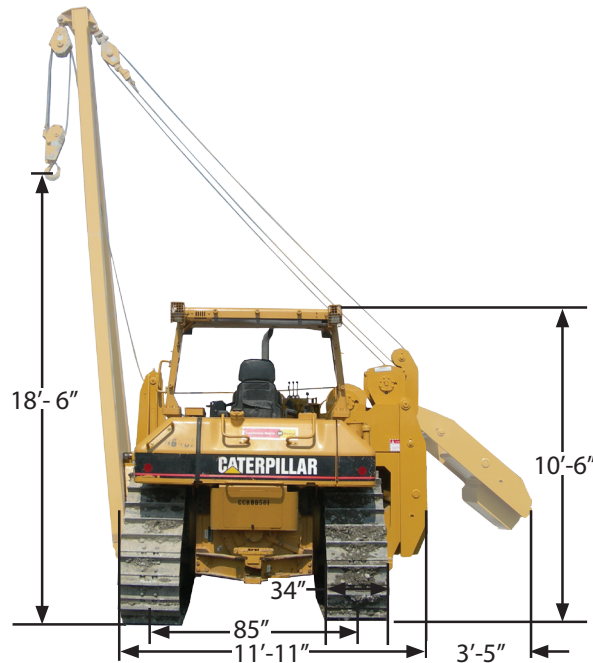
Optional Features:

- **Boom lengths**
- **Emergency free-fall** function on load winch.
- **Front bumper** that helps prevents damage to front of machine.
- **Load monitoring system**

SIDEBOOM ATTACHMENTS

M550ch

on CAT D6M LGP



Load Capacity

Maximum Load at 4 ft overhang	50,000 lb (22,679 kg)
Rated Load at 4 ft Overhang	42,500 lb (19,278 kg)
Maximum Working Load at 4 ft overhang	30,900 lb (14,016 kg)

Boom and Blocks

Standard Boom	20 ft (6 m) Folding
Boom Line Parts	3
Load Line Parts	3
Typical Hook Speed	45/23 ft/min (14/7 m/min)

Winches

Boom Winch	Planetary, Single Speed, Dual Brake System
Load Winch	Planetary, Two Speed, Dual Brake System
Wire Rope Installed - Boom Winch	150 ft (46 m)
Maximum Cable Capacity - Boom Winch	368 ft (112m)
Wire Rope Installed - Load Winch	150 ft (46 m)
Maximum Cable Capacity - Load Winch	368 ft (112m)
Wire Rope - Boom	5/8" (16 mm), 6x36 EIPS, IWRC [41,200 lbs (18,688 kg) Minimum Breaking Strength]
Wire Rope - Load	5/8" (16 mm), 6x36 EIPS, IWRC [41,200 lbs (18,688 kg) Minimum Breaking Strength]

Hydraulic System

Directional Control Valve	3-Section, closed center with manual control
Operating Pressure	3,000 psi (207 bar)
Pump Output	45 gpm (170 lpm)

Weights

Removable Counterweight Segments	9 at 420 lb (190 kg) each
Total Extendible Counterweight (Segments & Frame)	4,850 lb (2,200 kg) each
Total Sideboom Attachment Weight	11,900 lb (5,398 kg)
Approximate Operating & Shipping Weight	48,300 lb (21,909 kg)