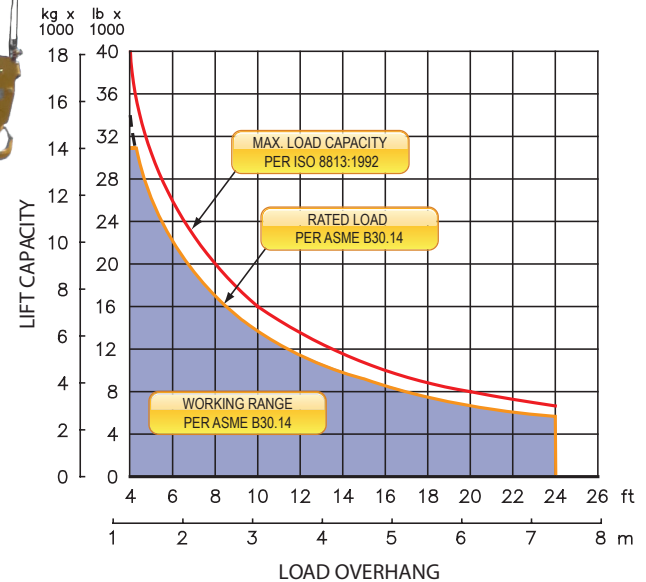


M540c

on JD700K LGP

LOAD RATING



FEATURES

Three lever hydraulic control system allows simultaneous control of load and boom functions. The controls are easy to operate and require minimal operator training.

Hydraulic boom stop automatically prevents system over travel and damage to boom.

Hydraulically operated, four-bar linkage counterweight system adds maximum stability and lifting capability. Low, compact design provides balanced weight distribution for optimum operating control and excellent visibility.

Tubular A-frame boom with quick release hinge pins for easy boom removal and maintenance.



Sideboom Controls

Viewing window allows full view of boom and blocks.

System employs tractor's existing hydraulic pump, filter and reservoir for convenience of OEM replacement parts and maintenance.

Optional Features:

Boom lengths

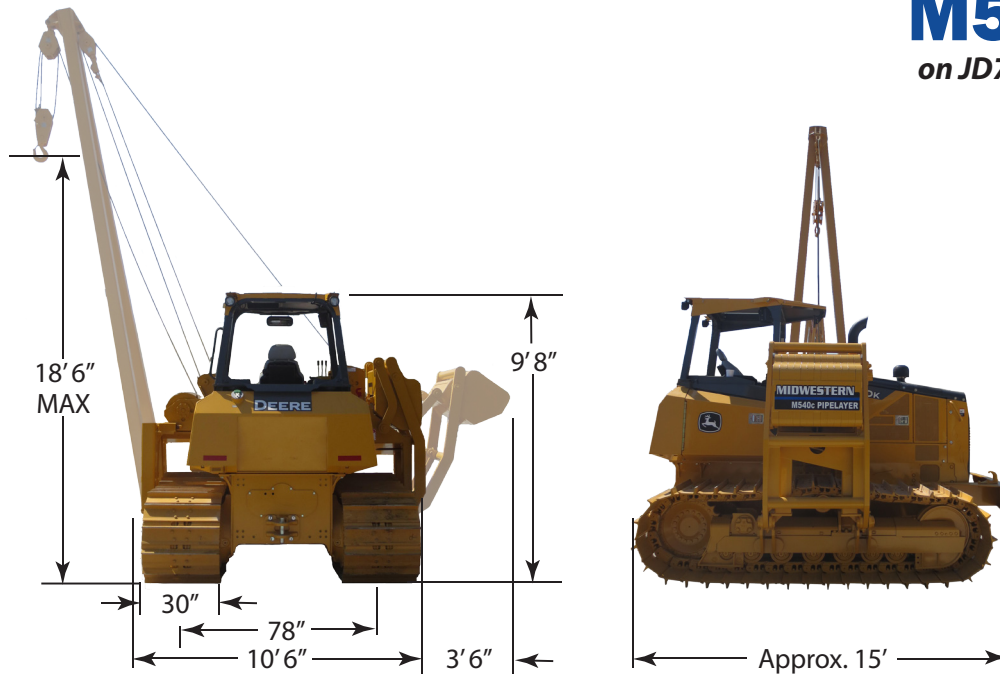
Emergency free-fall function on load winch.

Front bumper that helps prevents damage to front of machine.

Load monitoring system

SIDEBOOM ATTACHMENTS

M540c on JD700K LGP



Load Capacity

Maximum Load Capacity at 4 ft overhang	40,000 lb (18,144 kg)
Rated Load at 4 ft overhang	34,000 lb (15,422 kg)
Maximum Working Load at 4 ft overhang	30,900 lb (14,016 kg)

Boom and Blocks

Standard Boom	20 ft (6.1 m)
Boom Line Parts	3
Load Line Parts	3
Typical Hook Speed	35/17 ft/min (10.7/5.2 m/min)

Winches

Boom Winch	Planetary, Single-Speed, Dual Brake System
Load Winch	Planetary, Two-Speed, Dual Brake System
Wire Rope Installed - Boom Winch	95 ft (29 m)
Maximum Cable Capacity - Boom Winch	368 ft (112 m)
Wire Rope Installed - Load Winch	100 ft (30.5 m)
Maximum Cable Capacity - Load Winch	368 ft (112 m)
Wire Rope - Boom & Load Line	5/8 in (16 mm), 6x36 EIPS, IWRC [41,200 lbs (18,688 kg) Minimum Breaking Strength]

Hydraulic System

Directional Control Valve	3-Section, Open Center with manual levers
Operating Pressure	3,000 psi (207 bar)
Pump Output	25 gpm (94.6 lpm)

Weights

Total Extendible Counterweight (Segments & Frame)	5,300 lb (2,404 kg)
Total Sideboom Attachment Weight	10,650 lb (4,831 kg)
Approximate Operating Weight	41,900 lb (18,597 kg)