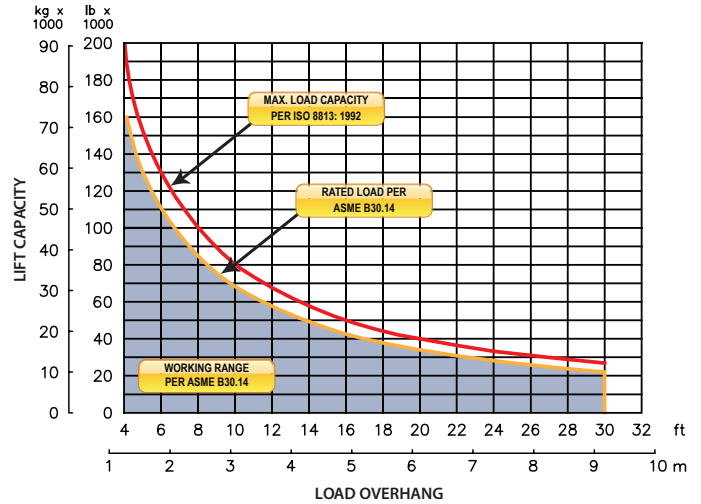


M594c

on CAT D9H

LOAD RATING



Sideboom Controls

FEATURES

Multi-axis, hydraulic joystick allows simultaneous, precise control of the load and boom functions with one hand. Single lever, hydraulic remote control valves are used for counterweight and two-speed functions. The controls are easy to operate and require minimal operator training.

Emergency free-fall function on load winch.

Hydraulic boom stop automatically prevents system over travel and damage to boom.

Hydraulically operated, four-bar linkage counterweight system adds maximum stability and lifting capability. Low, compact design provides balanced weight distribution for optimum operating control and excellent visibility.

System employs tractor's existing hydraulic pump, filter and reservoir for convenience of OEM replacement parts and maintenance.

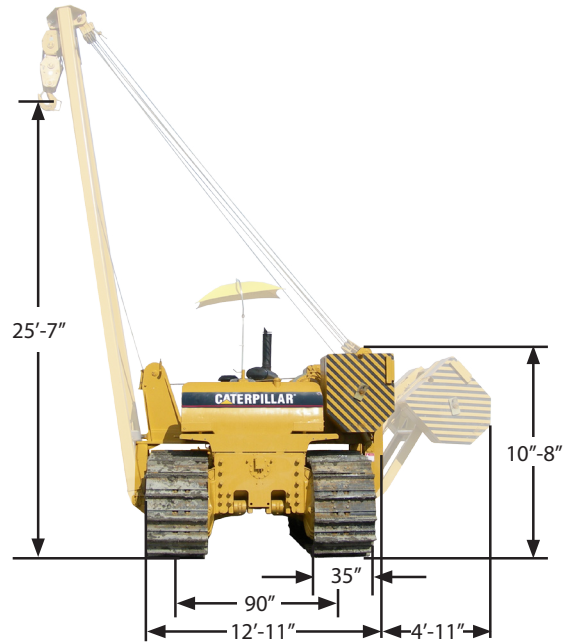
Tubular A-frame boom with quick release hinge pins for easy boom removal and maintenance.

Standard bumper helps prevent damage to front of machine.

Optional boom lengths and load monitoring system available.

SIDEBOOM ATTACHMENTS

M594c on CAT D9H



Load Capacity	
Maximum Load at 4 ft Overhang	200,000 lb (90,720 kg)
Rated Load at 4 ft Overhang	170,000 lb (77,112 kg)
Maximum Working Load at 4 ft Overhang	117,600 lb (53,342 kg)
Boom and Blocks	
Standard Boom	28 ft (8.5m)
Boom Line Parts	5
Load Line Parts	8
Typical Hook Speed	37/17 ft/min (11.3/5.2 m/min)
Winches	
Boom Winch	Planetary, Two-Speed, Dual Brake System
Load Winch	Planetary, Two-Speed, Dual Brake System, Free-Fall
Wire Rope Installed - Boom Winch	205 ft (62.5 m)
Maximum Cable Capacity - Boom Winch	459 ft (140 m)
Wire Rope Installed - Load Winch	350 ft (107 m)
Maximum Cable Capacity - Load Winch	459 ft (140 m)
Wire Rope - Boom & Load Line	3/4 in (19 mm), 6x36 EIPS, IWRC [58,800 lbs (26,671 kg) Minimum Breaking Strength]
Hydraulic System	
Directional Control Valve	3-Section, Load Sense, Pressure Compensated w/ Pilot Controls
Operating Pressure	4,000 psi (276 bar)
Pump Output	70 gpm (265 lpm)
Weights	
Removable Counterweight Segments	24,940 lb (10,859 kg) (18 Segments)
Total Extendible Counterweight (Segments & Frame)	28,400 lb (12,882 kg)
Total Sideboom Attachment Weight	48,500 lb (22,000 kg)
Approximate Operating Weight	128,350 lb (58,219 kg)
Approx. Shipping Weight - Less Boom & CWT Segments	96,350 lb (43,704 kg)
Approx. Shipping Weight - Less Boom & CWT Assembly	88,350 lb (40,075 kg)