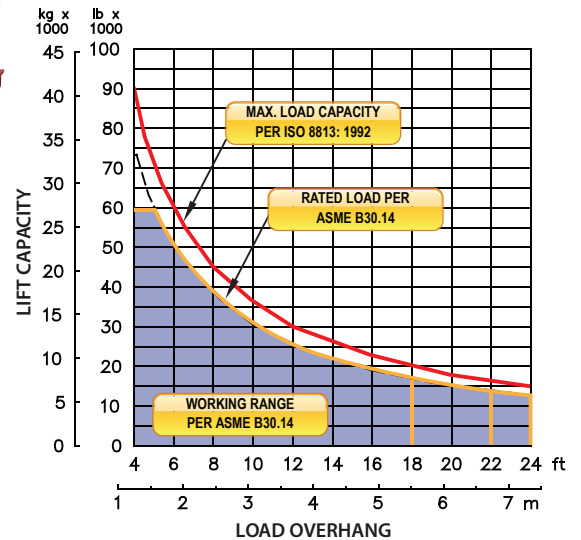


M572ch on CAT D6T LGP Tier 4i

LOAD RATING



Sideboom Controls

FEATURES

Multi-axis, hydraulic joystick allows simultaneous, precise control of the load and boom functions with one hand. Single lever, hydraulic remote control valves are used for counterweight and two-speed functions. The controls are easy to operate and require minimal operator training.

Emergency free-fall function on load winch.

Hydraulic boom stop automatically prevents system over travel and damage to boom.

Hydraulically operated, four-bar linkage counterweight system adds maximum stability and lifting capability. Low, compact design provides balanced weight distribution for optimum operating control and excellent visibility.

System employs tractor's existing hydraulic pump, filter and reservoir for convenience of OEM replacement parts and maintenance.

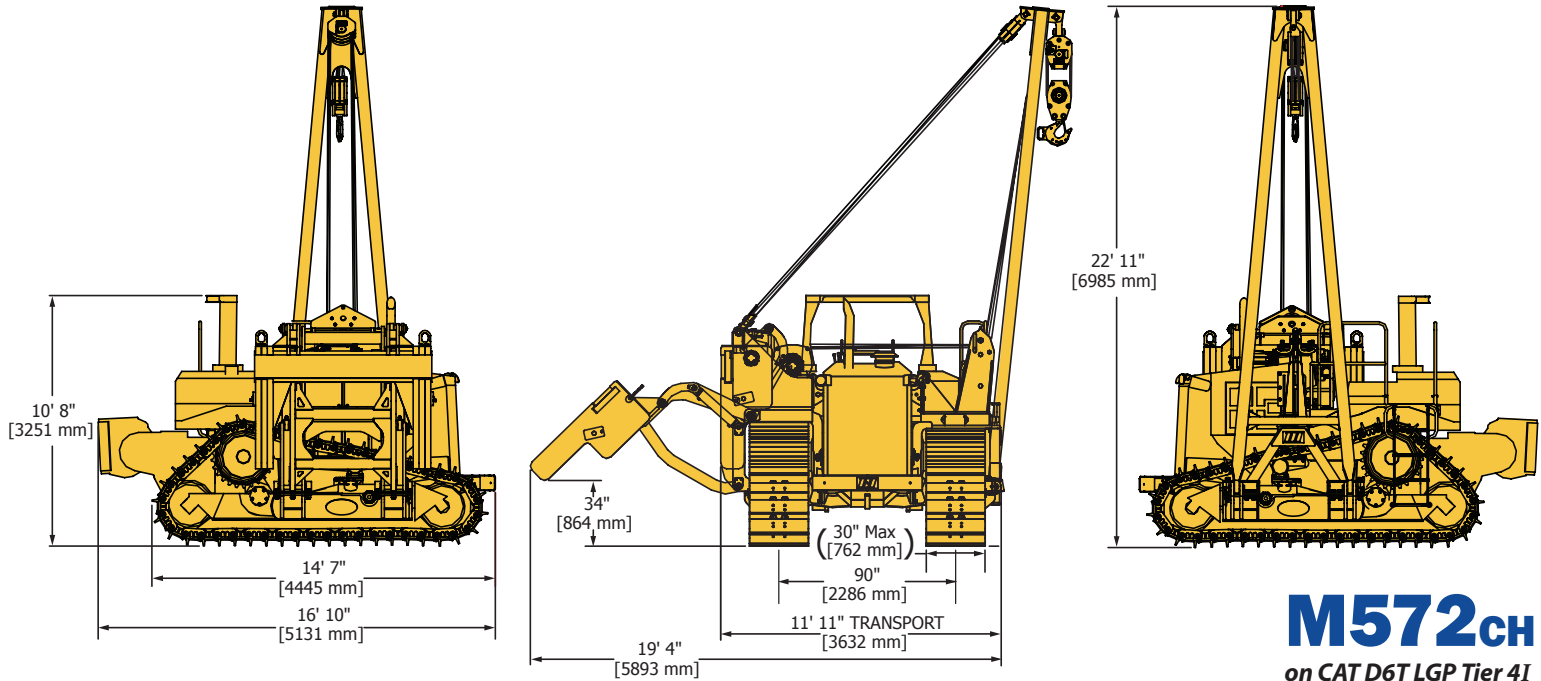
Tubular A-frame boom with quick release hinge pins for easy boom removal and maintenance.

Custom designed ladder and platform allows for safe and easy access.

Standard bumper helps prevent damage to front of machine.

Optional enclosed cab, boom lengths and load monitoring system available.

SIDEBOOM ATTACHMENTS



Load Capacity

Maximum Load at 4 ft overhang	90,000 lb (40,823 kg)
Rated Load at 4 ft Overhang	75,500 lb (34,700 kg)
Maximum Working Load at 4 ft overhang	58,800 lb (26,671 kg)

Boom and Blocks

Standard Boom	20 ft (6.1 m)
Boom Line Parts	4
Load Line Parts	4
Typical Hook Speed (HI/LO)	60/30 ft/min (18/9 m/min)

Winches

Boom Winch	Planetary, Two-Speed, Dual Brake System
Load Winch	Planetary, Two-Speed, Dual Brake System, Free-Fall
Wire Rope Installed - Boom Winch	160 ft (48.8 m)
Maximum Cable Capacity - Boom Winch	242 ft (73.8 m)
Wire Rope Installed - Load Winch	160 ft (48.8 m)
Maximum Cable Capacity - Load Winch	423 ft (129 m)
Wire Rope - Boom & Load Line	3/4 in (19 mm), 6x36 EIPS, IWRC [58,800 lbs (26,671 kg) Minimum Breaking Strength]

Hydraulic System

Directional Control Valve	3-Section, Load Sense, Pressure Compensated w/ Pilot Controls
Operating Pressure	3,250 psi (224 bar)
Pump Output	54 gpm (205 lpm)

Weights

Removable Counterweight Segments	2 @ 1,878 lb (852 kg) each
Total Extendible Counterweight (Segments & Frame)	10,200 lb (4,627 kg)
Total Sideboom Attachment Weight	25,600 lb (11,612 kg)
Approximate Operating Weight	65,000 lb (29,484 kg)
Approx. Shipping Weight - Less Boom @ 2,200 lb (998 kg)	62,800 lb (28,486 kg)