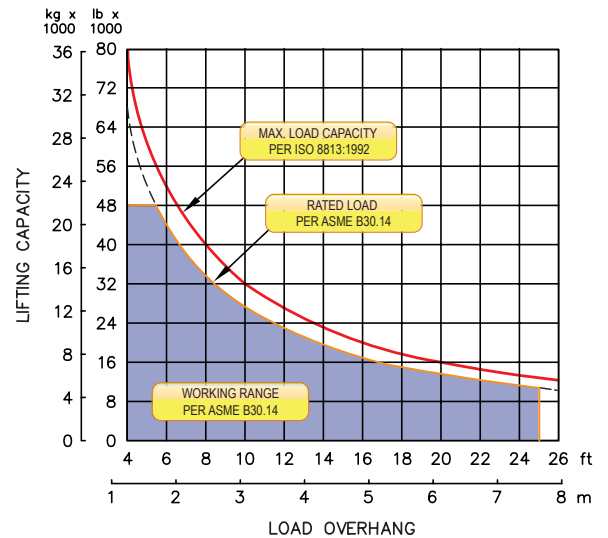


M571c XL on CAT D7G



LOAD RATING



Sideboom Controls

FEATURES

Multi-axis, hydraulic joystick allows simultaneous, precise control of the load and boom functions with one hand. Single lever, hydraulic remote control valves are used for counterweight and two-speed functions. The controls are easy to operate and require minimal operator training.

Hydraulic boom stop automatically prevents system over travel and damage to boom.

Hydraulically operated, four-bar linkage counterweight system adds maximum stability and lifting capability. Low, compact design provides balanced weight distribution for optimum operating control and excellent visibility.

System employs tractor's existing hydraulic pump, filter and reservoir for convenience of OEM replacement parts and maintenance.

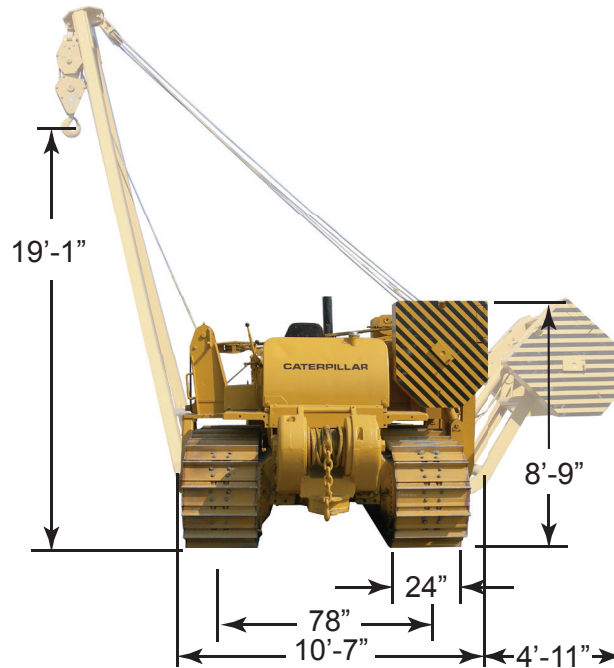
Tubular A-frame boom with quick release hinge pins for easy boom removal and maintenance.

Optional boom lengths, emergency free-fall, certified ROPS and load monitoring system available.

SIDEBOOM ATTACHMENTS

M571c XL

on CAT D7G



Load Capacity

Maximum Load at 4 ft overhang	80,000 lb (36,287 kg)
Rated Load at 4 ft Overhang	68,000 lb (30,845 kg)
Maximum Working Load at 4 ft overhang	48,000 lb (21,772 kg)

Boom and Blocks

Standard Boom	20 ft (6.1 m)
Boom Line Parts	4
Load Line Parts	4
Typical Hook Speed (HI/LO)	55/27 ft/min (16.8/8.2 m/min)

Winches

Boom Winch	Planetary, Single-Speed, Dual Brake System
Load Winch	Planetary, Two-Speed, Dual Brake System, Free-Fall
Wire Rope Installed - Boom Winch	140 ft (42.7 m)
Maximum Cable Capacity - Boom Winch	242 ft (73.8 m)
Wire Rope Installed - Load Winch	160 ft (48.8 m)
Maximum Cable Capacity - Load Winch	242 ft (73.8 m)
Wire Rope - Boom & Load Line	3/4 in (19 mm), 6x36 EIPS, IWRC [58,800 lbs (26,671 kg) Minimum Breaking Strength]

Hydraulic System

Directional Control Valve	3-Section, Open Center with Manual Levers
Operating Pressure	3,000 psi (207 bar)
Pump Output	63 gpm (238 lpm)

Weights

Removable Counterweight Segments	6 @ 1,335 lb (606 kg) each
Total Extendible Counterweight (Segments & Frame)	15,900 lb (7,121 kg)
Total Sideboom Attachment Weight	28,000 lb (12,700 kg)
Approximate Operating Weight	64,000 lb (29,030 kg)
Approx. Shipping Weight - Less Boom at 2,070 lb (939 kg)	61,930 lb (28,091 kg)