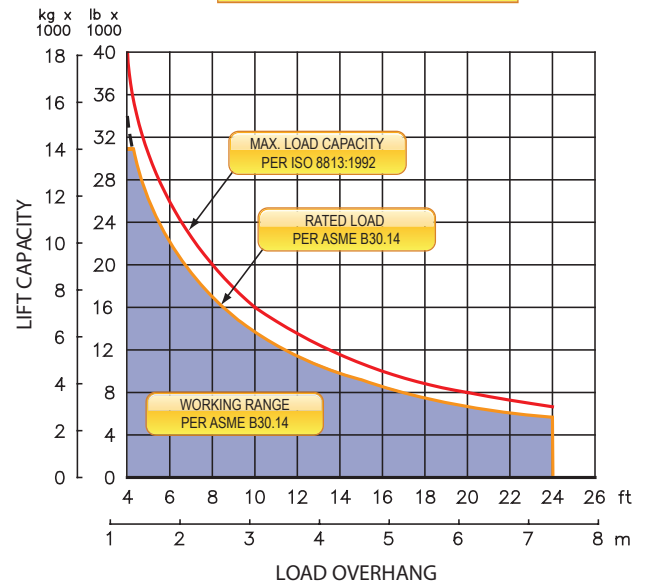


## M540c

on CAT D6K2

### LOAD RATING



## FEATURES

**Multi-axis, electronic joystick** allows simultaneous, precise control of the load and boom functions with one hand. Electronic rocker switches are used for counterweight and two-speed functions. The controls are easy to operate and require minimal operator training.

**Improved operator visibility** due to new compact sideboom attachment design.

**Emergency free-fall** function on load winch.

**Hydraulically operated, four-bar linkage counterweight system** adds maximum stability and lifting capability. Low, compact design provides balanced weight distribution for optimum operating control and excellent visibility.



Improved Operator Visibility



Integrated Sideboom Controls

**Electrohydraulic boom stop** automatically prevents system over travel and damage to boom.

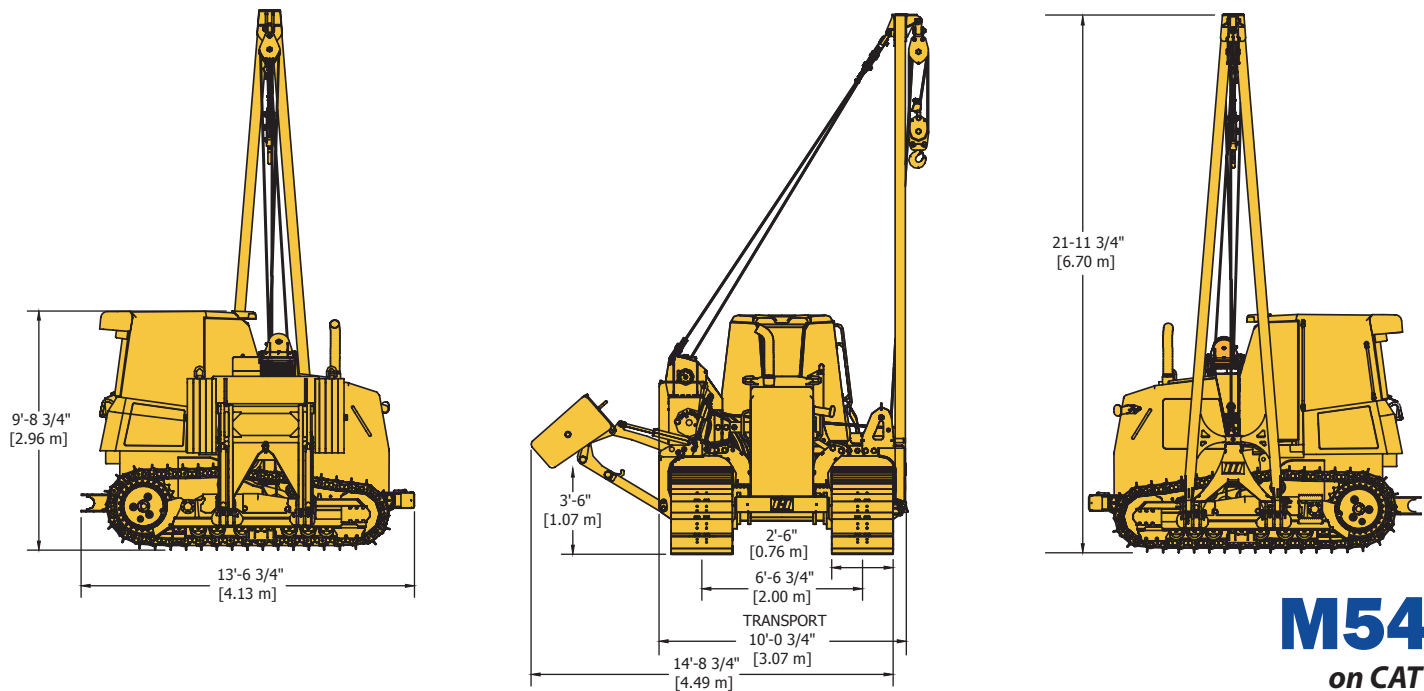
**System employs tractor's existing hydraulic pump, filter and reservoir** for convenience of OEM replacement parts and maintenance.

**Tubular A-frame boom** with quick release hinge pins for easy boom removal and maintenance.

**Standard bumper** helps prevent damage to front of machine.

**Optional** boom lengths and load monitoring system available.

# SPECIFICATIONS



**M540c**  
on CAT D6K2

## Load Capacity

Maximum Load Capacity at 4 ft Overhang	40,000 lb (18,144 kg)
Rated Load at 4 ft Overhang	34,000 lb (15,422 kg)
Maximum Working Load at 4 ft Overhang	30,900 lb (14,016 kg)

## Boom and Blocks

Standard Boom	20 ft (6.1 m)
Boom Line Parts	3
Load Line Parts	3
Typical Hook Speed	60/30 ft/min (18/9 mpm)

## Winches

Boom Winch	Planetary, Two-Speed, Dual Brake System
Load Winch	Planetary, Two-Speed, Dual Brake System, Free-Fall
Wire Rope Installed - Boom Winch	130 ft (39.6 m)
Maximum Cable Capacity - Boom Winch	270 ft (82.3 m)
Wire Rope Installed - Load Winch	140 ft (42.7 m)
Maximum Cable Capacity - Load Winch	270 ft (82.3 m)
Wire Rope - Boom & Load Line	5/8 in (16 mm), 6x37 EIPS, IWRC [41,200 lbs (18,688 kg) Minimum Breaking Strength]

## Hydraulic System

Directional Control Valve	3-Section, Load Sense, Pressure Compensated w/ Electronic Controls
Operating Pressure	3,200 psi (221 bar)
Pump Output	31.5 gpm (119 lpm)

## Weights

Removable Counterweight Segments	2 @ 2,200 lb (998 kg) each
Total Extendible Counterweight (Segments & Frame)	6,300 lb (2,858 kg)
Total Sideboom Attachment Weight	12,402 lb (5,625 kg)
Approximate Operating & Shipping Weight	39,000 lb (17,690 kg)