



Picture of CAT 420D



FEATURES

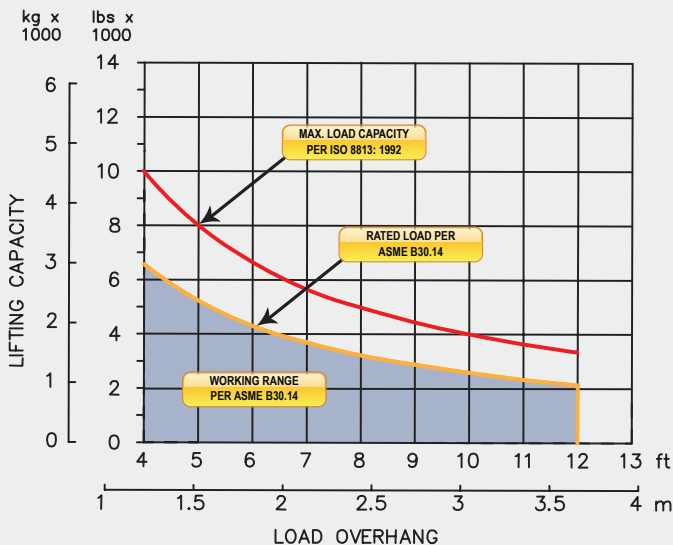
Three lever hydraulic control allows simultaneous, precise control of the load and boom functions. The controls are easy to operate and require minimal operator training.

Telescopic boom engineered for exceptional support at maximum lift capacity and ease of transportation.

System employs tractor's existing hydraulic pump, filter and reservoir for convenience of OEM replacement parts and maintenance.

Sideboom attachment can be used in conjunction with tractor's original equipment.

LOAD RATING



SPECIFICATIONS

Load Capacity

Maximum Load Capacity at 4 ft Overhang	10,000 lb (4,536 kg)
Rated Load at 4 ft Overhang	6,500 lb (2,948 kg)
Maximum Working Load at 4 ft Overhang	5,100 lb (2,313 kg)

Winch

Load Winch	Worm Gear with Multiple Disc Oil Brake, Single Speed
Wire Rope Installed - Load Winch	45 ft (13.7 m)
Maximum Cable Capacity - Load Winch	44 ft (13.4 m)
Wire Rope	7/16" (11 mm), 6x36 EIPS, IWRC [20,400 lbs (9,253 kg) Minimum Breaking Strength]

Boom and Blocks

Standard Boom	7 ft (2.1 m) Retracted 12 ft (3.7 m) Extended
Load Line Parts	1
Typical Hook Speed (HI/LO)	65 ft/min (19.8 m/min)

Hydraulic System

Directional Control Valve	3-Section, Open or Closed Center with Cable Controls
Operating Pressure	3,000 psi (207 bar)
Pump Output	20 gpm (76 lpm)

Weights

Removable Counterweight	700 lb (317.5 kg)
Total Sideboom Attachment Weight	1,700 lb (771 kg)

SIDEBOOM ATTACHMENTS