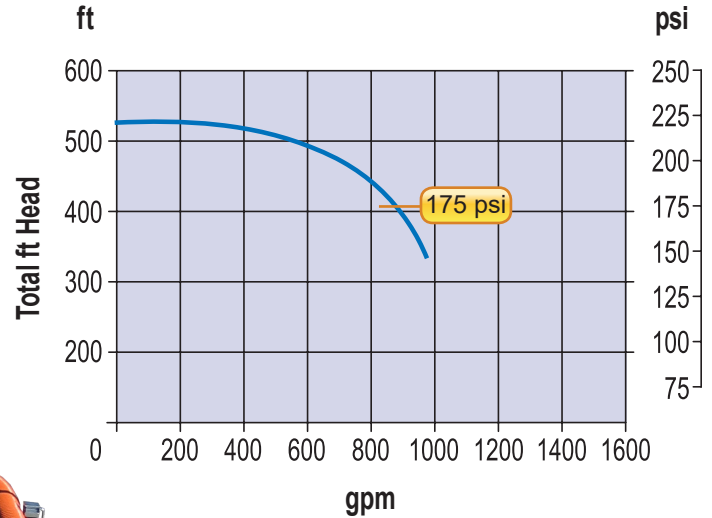


## HTU 500 HYDROSTATIC FILL AND TEST UNIT

with Hydraulic Driven Test Pump



### Fill Pump Performance @ Maximum Rated HP



Optional Remote Control Panel



Operator's Control Station

## FEATURES

**Ease of Operation** – the HTU is designed to fill and test pipelines using a single power source. Push button controls are provided for independent operation of the fill and test pumps. The fill pump can output up to 600 gpm @ 500 ft of head, and the test pump output is fully variable up to 3,205 psi @ 23 gpm.

**High Flow Centrifugal Fill Pump** with inlet suction strainer and a butterfly valve on the outlet to facilitate priming and flow regulation

**High Pressure Triplex Test Pump** with full variable speed control and pulsation dampener for smooth operation

**High Pressure Check Valve** which allows automatic switchover function from fill to test

**Enclosed Diesel Engine Power Pack** with electric over hydraulic clutch engagement PTO

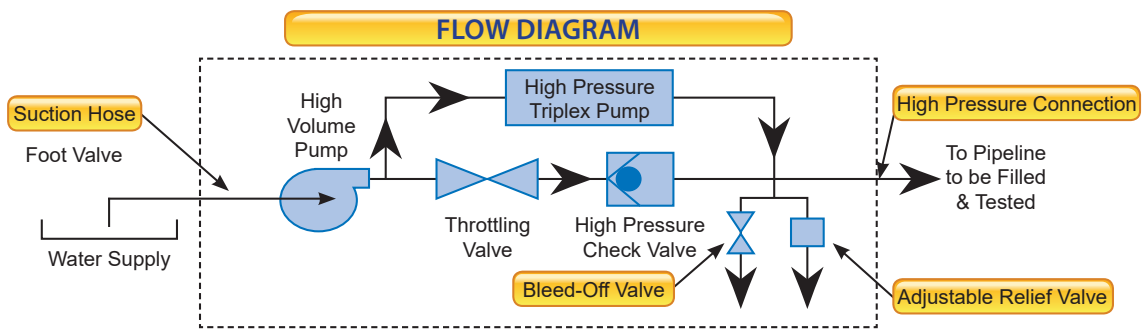
**Fully Equipped Tandem Axle Trailer** with leveling jacks and lifting lug

**Operator's Control Station** includes all engine and operating controls with gauge display. Optional: Remote control panel with 100 ft cord

**Operation Readings** including suction temperature, suction pressure, fill pressure, fill flow, test pressure, test flow and test volume.

**Drain Valves** to release pressure and drain fluid from system

**20ft Suction Hose** with quick connect



## SPECIFICATIONS

08/20

<b>Engine</b>	
Emission Certification	CARB Tier 4 (F), EU Stage IV, US EPA Tier 4 (F)
Cylinders	4
Displacement	275 in <sup>3</sup> (4.5 l)
Maximum Rated Speed	2500 rpm (Set to 2,000 Maximum rpm)
Power Rating @ 2,000 rpm	173 hp (129 kW)
Maximum Torque @ 1,500 rpm	520 lbft (705 Nm)
Minimum Idle Speed	700 rpm
Specific Fuel Consumption (based on 2000 rpm with No. 2 diesel fuel)	0.347 lb/hph (211 g/kWh)
Voltage	12V
Mechanical Power Take-off, Heavy Duty	Hydraulic Actuation
<b>Fill Pump</b>	
Type	Centrifugal, Multi Stage
Liquid	Water
Flow at Maximum Efficiency (NPSHR @ 8.2 ft)	800 gpm
Shut Off Head	525 ft
<b>Test Pump</b>	
Type	Triplex Plunger Pump
Plunger Size	1-1/4 in (31.7 mm)
Maximum Pressure	3,205 psi (221 bar)
Displacement Volume @ 420 rpm	23 gpm (89 lpm)
Maximum Continuous Speed	420 rpm
Maximum Intermittent Speed	460 rpm
Displacement	0.0558 US gpm/rpm (0.2112 lpm/rpm)
Displacement/Stroke (per plunger)	0.0186 US gpm/stroke
<b>Test Pump Drive</b>	
Type	Hydraulic, Fully Variable, Electronic Control
Reservoir	5 Gallons (18.9 L)
Operating Pressure	3,626 psi (250 bar)
<b>Trailer</b>	
Type	10,000 lb Utility Trailer, Tandem Axle
Brakes	Electric on all Wheels
Wheels	6" x 15", 6-Hole, Single
Tires	ST225/75R 15 LR D
Ball Coupler	2-5/16" Adjustable
Safety Chains	(2) 5/16"x12" Long w/ Safety Hooks
Leveling Jacks	(2) 5K Side Winds, Swivel Type
Lights and Wiring	Running and Tail Lights with 7-Way RV Plug
Accessories	Spare Tire, ST225 Mounted on 15" Rim
<b>Connections</b>	
Suction	6" x 150 lb Flange w/ 20 ft Long Suction Hose
Discharge	4" x 900 lb ANSI Flange
<b>Fuel</b>	
Type	Diesel
Capacity	75 gal (284 l)
<b>Shipping Weights</b>	
Trailer Model	8,900 lb (4,036 kg)
Skid Mounted Model	8,600 lb (3,900 kg)
<b>Overall Dimensions</b>	
Trailer Model	96"Wx204"Lx98"H
Skid Mounted Model	96"Wx204"Lx80"H