



## FEATURES

**Three lever hydraulic control system** allows simultaneous control of load and boom functions. The controls are easy to operate and require minimal operator training.

**Hydraulic boom stop** automatically prevents system over travel and damage to boom.

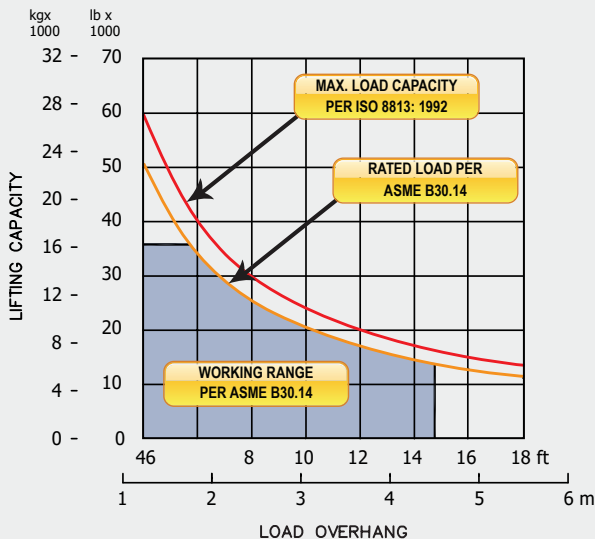
**Free-Fall function** on load winch.

**Hydraulic Oil Cooler**

**Optional:**

- Tubular A-Frame Boom
- Remote Hydraulic Pilot Controls
- Certified ROPS

### LOAD RATING



## SPECIFICATIONS

### Load Capacity

Maximum Load Capacity at 4 ft overhang	60,000 lb (27,216 kg)
Rated Load at 4 ft overhang	51,000 lb (23,134 kg)
Maximum Working Load at 4 ft overhang	35,800 lb (16,239 kg)

### Winches

Boom Winch	Planetary, Single-Speed, Dual Brake System
Load Winch	Planetary, Two-Speed, Dual Brake System
Wire Rope Installed - Boom Winch	130 ft (39.6 m)
Maximum Cable Capacity - Boom Winch	368 ft (112 m)
Wire Rope Installed - Load Winch	140 ft (42.7 m)
Maximum Cable Capacity - Load Winch	368 ft (112 m)
Wire Rope - Load Line	3/4 in (19 mm), 6x36 EIPS, IWRC [58,800 lbs (26,672 kg) Minimum Breaking Strength]
Wire Rope - Boom Line	5/8 in (16 mm), 6x37 EIPS, IWRC [41,200 lbs (18,688 kg) Minimum Breaking Strength]

### Boom and Blocks

Boom Line Parts	3
Load Line Parts	3
Typical Hook Speed (HI/LO)	70/35 ft/min (21.3/10.7 m/min)

### Hydraulic System

Directional Control Valve	3-Section, Open Center with Manual Levers
Operating Pressure	3,000 psi (207 bar)

### Weights

Total Hydraulic Conversion Kit	4,530 lb (2,055 kg)
--------------------------------	---------------------

## HYDRAULIC CONVERSION KIT