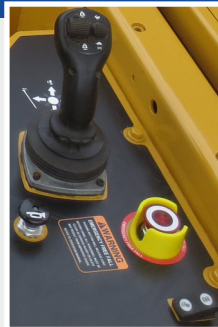




FEATURES

Multi-functional joystick controller allows simultaneous, precise control of the load and boom functions with one hand. Electronic rocker switches are used for counterweight and two-speed functions. The controls are easy to operate and require minimal operator training.



High capacity pipelayer winch package with high efficiency, two-speed piston motors.

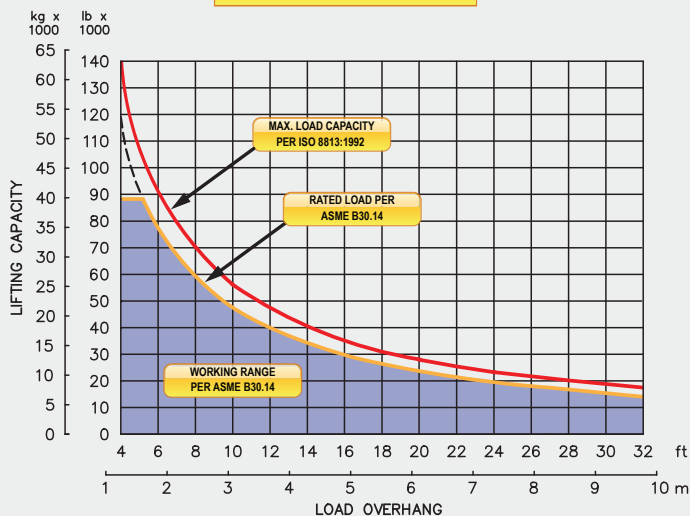
Emergency free-fall function on load winch.

Electrohydraulic boom stop automatically prevents system over travel and damage to boom.

Hydraulic Oil Cooler

Optional boom lengths and certified ROPS available.

LOAD RATING



SPECIFICATIONS

Load Capacity

Maximum Load Capacity at 4 ft Overhang	140,000 lb (63,504 kg)
Rated Load at 4 ft Overhang	119,000 lb (53,978 kg)
Maximum Working Load at 4 ft Overhang	88,200 lb (40,008 kg)

Winches

Boom Winch	Planetary, Two-Speed, Dual Brake System
Load Winch	Planetary, Two-Speed, Dual Brake System
Wire Rope Installed - Boom Winch	220 ft (67 m)
Maximum Cable Capacity - Boom Winch	468 ft (142.6 m)
Wire Rope Installed - Load Winch	275 ft (83.8 m)
Maximum Cable Capacity - Load Winch	468 ft (142.6 m)
Wire Rope - Boom & Load Line	3/4 in (19 mm), 6x36 EIPS, IWRC [58,800 lbs (26,672 kg) Minimum Breaking Strength]

Boom and Blocks

Boom Line Parts	5
Load Line Parts	6
Typical Hook Speed (HI/LO)	60/30 ft/min (18.3/7.6 m/min)

Hydraulic System

Directional Control Valve	3-Section, P.C., L.S. with E.H. Controls
Maximum Operating Pressure	4,000 psi (276 bar)

Weights

Total Hydraulic Conversion Kit	6,375 lb (2,892 kg)
--------------------------------	---------------------

HYDRAULIC CONVERSION KIT