



## FEATURES

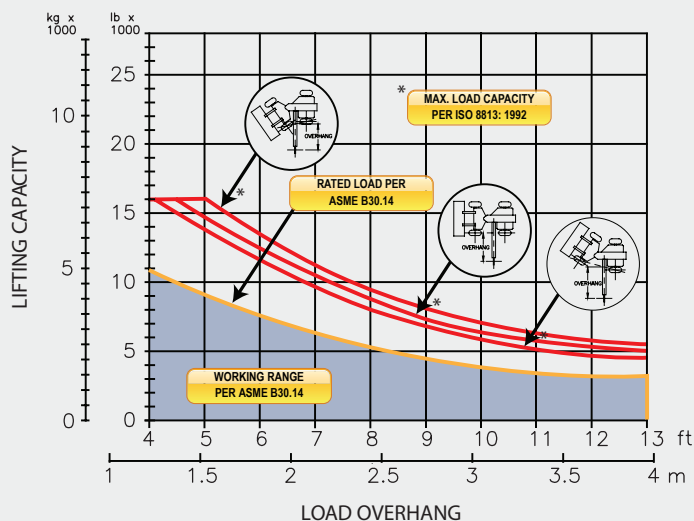
**Three lever hydraulic control** allows simultaneous, precise control of the load and boom functions. The controls are easy to operate and require minimal operator training.

**Tubular telescoping boom** engineered for exceptional support at maximum lift capacity and ease of transportation.

**System employs tractor's existing hydraulic pump, filter and reservoir** for convenience of OEM replacement parts and maintenance.

**Sideboom attachment** can be used in conjunction with tractor's original equipment.

### LOAD RATING



## SPECIFICATIONS

### Load Capacity

Maximum Load Capacity at 4 ft Overhang	16,000 lb (7,258 kg)
Rated Load at 4 ft Overhang	10,400 lb (4,717 kg)
Maximum Working Load at 4 ft Overhang	10,400 lb (4,717 kg)

### Winch

Load Winch	Planetary, Single Speed, Dual Brake System
Wire Rope Installed - Load Winch	50 ft (15.2 m)
Maximum Cable Capacity - Load Winch	102 ft (31.1 m)
Wire Rope	1/2" (13 mm), 6x36 EIPS, IWRC [26,600 lbs (12,065 kg) Minimum Breaking Strength]

### Boom and Blocks

Telescopic Boom	8 ft (2.4 m) Retracted 13 ft (4 m) Extended
Load Line Parts	2
Typical Hook Speed	90 ft/min (27.4 m/min)

### Hydraulic System

Directional Control Valve	3-Section, Open or Closed Center with Cable Controls
Operating Pressure	3,600 psi (248 bar)
Pump Output	45 gpm (170 lpm)

### Weights

Removable Counterweight (Optional)	2,500 lb (1,134 kg) each
Sideboom Attachment Weight (Counterweight not included)	2,000 lb (907 kg)

## SIDEBOOM ATTACHMENTS