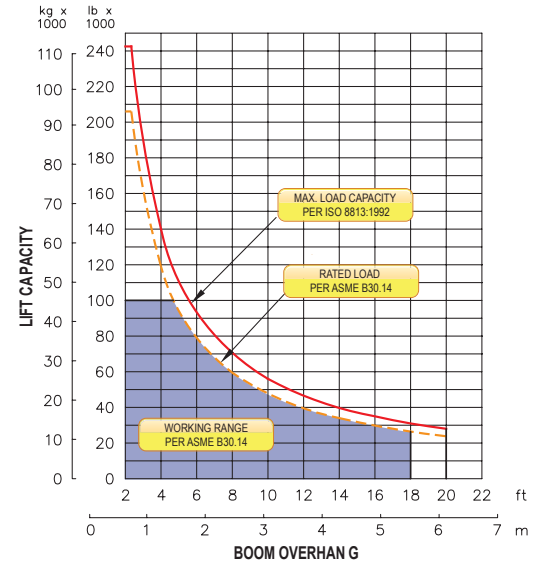


## M583C-RR on CAT D8K

### LOAD RATING



Integrated Sideboom Controls

## FEATURES

**Multi-axis, hydraulic joystick** allows simultaneous, precise control of the load and boom functions with one hand. Single lever, hydraulic remote control valves are used for counterweight and two-speed functions. The controls are easy to operate and require minimal operator training.

**Emergency free-fall** function on load winch.

**Hydraulic boom stop** automatically prevents system over travel and damage to boom.

**Hydraulically operated, four-bar linkage counterweight system** adds maximum stability and lifting capability. Low, compact design provides balanced weight distribution for optimum operating control and excellent visibility.

**System employs tractor's existing hydraulic pump, filter and reservoir** for convenience of OEM replacement parts and maintenance.

**Tubular A-frame boom** with quick release hinge pins for easy boom removal and maintenance.

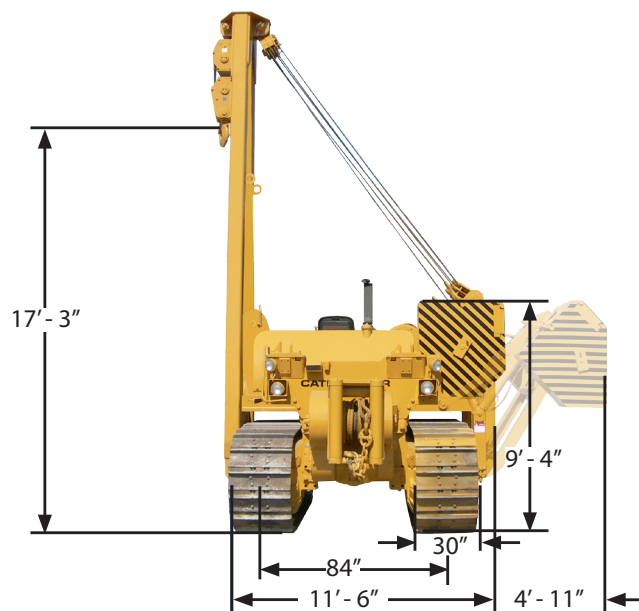
**Standard bumper** helps prevents damage to front of machine.

**Optional** boom lengths and load monitoring system available.

## SIDEBOOM ATTACHMENTS

# SPECIFICATIONS

## M583C-RR on CAT D8K



### Load Capacity

Maximum Load Capacity @ 2 ft Overhang	240,000 lb (108,862 kg)
Maximum Working Load @ 2 ft Overhang	117,600 lb (53,342 kg)

### Boom and Blocks

Standard Boom	20 ft (6.1 m)
Boom Line Parts	5
Load Line Parts	8
Typical Hook Speed (HI/LO)	40/20 ft/min (12.2/6.1 mpm)

### Winches

Boom Winch	Planetary, Two-Speed, Dual Brake System
Load Winch	Planetary, Two-Speed, Dual Brake System, Free-Fall
Wire Rope Installed - Boom Winch	180 ft (54.9 m)
Maximum Cable Capacity - Boom Winch	459 ft (140 m)
Wire Rope Installed - Load Winch	220 ft (67 m)
Maximum Cable Capacity - Load Winch	459 ft (140 m)
Wire Rope - Boom & Load Line	3/4 in (19 mm), 6x37 EIPS, IWRC [58,800 lbs (26,672 kg) Minimum Breaking Strength]

### Hydraulic System

Directional Control Valve	3-Section, open center with Pilot Controls
Operating Pressure	3,250 psi (224 bar)
Pump Output	70 gpm (265 lpm)

### Weights

Removable Counterweight Segments	12 @ 1,330 lb (603.3 kg) each
Total Extendible Counterweight (Segments & Frame)	25,000 lb (11,340 kg)
Approximate Operating Weight	97,800 lb (44,361 kg)
Approx. Shipping Weight - Less Boom & CWT Segments	78,000 lb (35,380 kg)