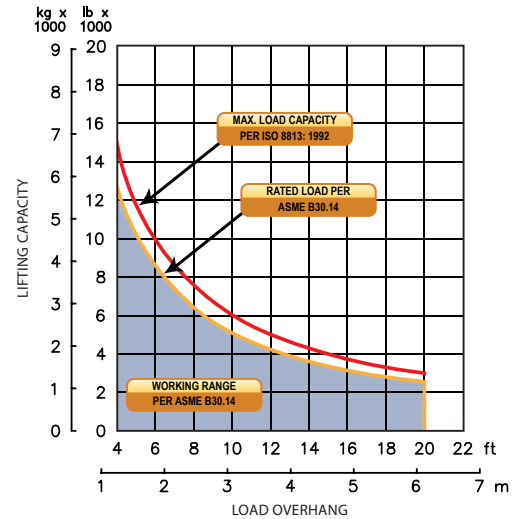


M515c on CAT D4K2 XL

LOAD RATING



Sideboom Controls

FEATURES

Three lever hydraulic control allows simultaneous, precise control of the load and boom functions. The controls are easy to operate and require minimal operator training.

Hydraulic boom stop automatically prevents system over travel and damage to boom.

Hydraulically operated, four-bar linkage counterweight system adds maximum stability and lifting capability. Low, compact design provides balanced weight distribution for optimum operating control and excellent visibility.

System employs tractor's existing hydraulic pump, filter and reservoir for convenience of OEM replacement parts and maintenance.

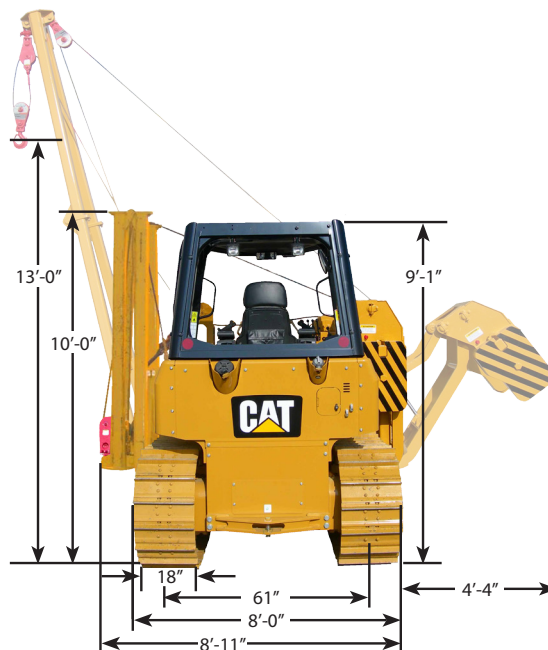
Viewing window for boom tip visibility at all times.

Folding boom for ease of transportation.

Optional two speed load winch and boom lengths available.

SIDEBOOM ATTACHMENTS

M515c on CAT D4K2 XL



Load Capacity	
Maximum Load at 4 ft Overhang	15,000 lb (6,804 kg)
Rated Load at 4 ft Overhang	12,750 lb (5,783 kg)
Maximum Working Load at 4 ft Overhang	12,000 lb (5,443 kg)
Boom and Blocks	
Standard Boom	15 ft (4.6 m) Folding
Boom Line Parts	2
Load Line Parts	2
Typical Hook Speed	40 ft/min (12.2 m/min)
Winches	
Boom Winch	Planetary, Single Speed, Dual Brake System
Load Winch	Planetary, Single Speed, Dual Brake System
Wire Rope Installed - Boom Winch	52 ft (15.8 m)
Maximum Cable Capacity - Boom Winch	102 ft (31.1 m)
Wire Rope Installed - Load Winch	90 ft (27.4 m)
Maximum Cable Capacity - Load Winch	102 ft (31.1 m)
Wire Rope - Boom	1/2" (13 mm), 6x36 EIPS, IWRC [26,600 lbs (12,091 kg) Minimum Breaking Strength]
Wire Rope - Load	1/2" (13 mm), 6x36 EIPS, IWRC [26,600 lbs (12,091 kg) Minimum Breaking Strength]
Hydraulic System	
Directional Control Valve	3-Section, open center with manual control
Operating Pressure	3,000 psi (207 bar)
Pump Output	24 gpm (91 lpm)
Weights	
Removable Counterweight Segments	2 @ 560 lb (254 kg) each
Total Extendible Counterweight (Segments & Frame)	2,350 lb (1,066 kg)
Total Sideboom Attachment Weight	4,900 lb (2,223 kg)
Approximate Operating & Shipping Weight	23,710 lb (10,755 kg)