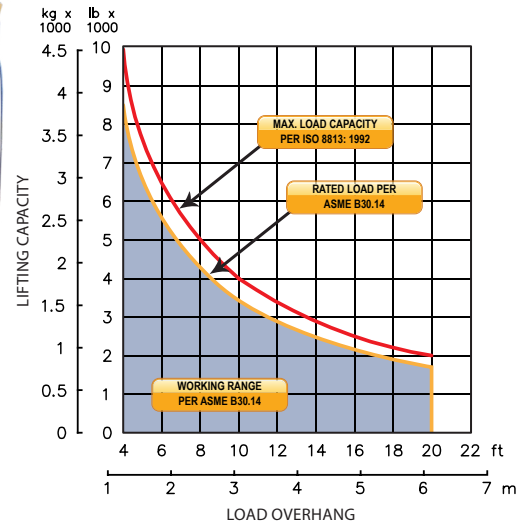


M510c on CAT D4K2 XL

LOAD RATING



Sideboom Controls

FEATURES

Three lever hydraulic control allows simultaneous, precise control of the load and boom functions. The controls are easy to operate and require minimal operator training.

Hydraulic boom stop automatically prevents system over travel and damage to boom.

Hydraulically operated, four-bar linkage counterweight system adds maximum stability and lifting capability. Low, compact design provides balanced weight distribution for optimum operating control and excellent visibility.

System employs tractor's existing hydraulic pump, filter and reservoir for convenience of OEM replacement parts and maintenance.

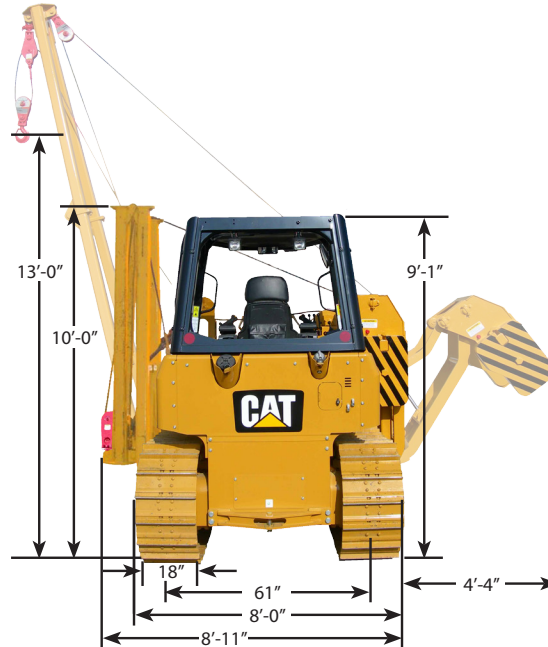
Viewing window for boom tip visibility at all times.

Folding boom for ease of transportation.

Optional two speed load winch and boom lengths available.

SIDEBOOM ATTACHMENTS

M510c on CAT D4K2 XL



Load Capacity	
Maximum Load at 4 ft Overhang	10,000 lb (4,536 kg)
Rated Load at 4 ft Overhang	8,500 lb (3,856 kg)
Maximum Working Load at 4 ft Overhang	8,500 lb (3,856 kg)
Boom and Blocks	
Standard Boom	15 ft (4.6 m) Folding
Boom Line Parts	2
Load Line Parts	2
Typical Hook Speed	40 ft/min (12.2 m/min)
Winches	
Boom Winch	Planetary, Single Speed, Dual Brake System
Load Winch	Planetary, Single Speed, Dual Brake System
Wire Rope Installed - Boom Winch	52 ft (15.8 m)
Maximum Cable Capacity - Boom Winch	102 ft (31.1 m)
Wire Rope Installed - Load Winch	90 ft (27.4 m)
Maximum Cable Capacity - Load Winch	102 ft (31.1 m)
Wire Rope - Boom	1/2" (13 mm), 6x36 EIPS, IWRC [26,600 lbs (12,091 kg) Minimum Breaking Strength]
Wire Rope - Load	1/2" (13 mm), 6x36 EIPS, IWRC [26,600 lbs (12,091 kg) Minimum Breaking Strength]
Hydraulic System	
Directional Control Valve	3-Section, open center with manual levers
Operating Pressure	3,000 psi (207 bar)
Pump Output	24 gpm (91 lpm)
Weights	
Removable Counterweight Segments	2 @ 280 lb (127 kg) each
Total Extendible Counterweight (Segments & Frame)	1,780 lb (807 kg)
Total Sideboom Attachment Weight	4,330 lb (1,964 kg)
Approximate Operating & Shipping Weight	23,000 lb (10,432 kg)