



FEATURES

Multi-axis, hydraulic joystick allows simultaneous, precise control of the load and boom functions with one hand. Single lever, hydraulic remote control valves are used for counterweight and two-speed functions. The controls are easy to operate and require minimal operator training.

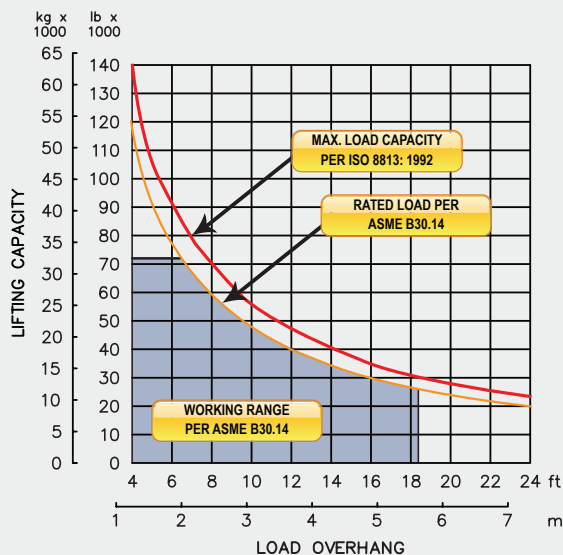
Hydraulic boom stop automatically prevents system over travel and damage to boom.

Free-Fall function on load winch.

Hydraulic Oil Cooler

Optional boom lengths and certified ROPS available.

LOAD RATING



SPECIFICATIONS

Load Capacity

Maximum Load Capacity at 4 ft Overhang	140,000 lb (63,504 kg)
Rated Load at 4 ft Overhang	119,000 lb (53,978 kg)
Maximum Working Load at 4 ft Overhang	72,000 lb (32,659 kg)

Winches

Boom Winch	Planetary, Two-Speed, Dual Brake System
Load Winch	Planetary, Two-Speed, Dual Brake System
Wire Rope Installed - Boom Winch	180 ft (54.9 m)
Maximum Cable Capacity - Boom Winch	242 ft (73.8 m)
Wire Rope Installed - Load Winch	180 ft (54.9 m)
Maximum Cable Capacity - Load Winch	423 ft (129 m)
Wire Rope - Boom & Load Line	3/4 in (19 mm), 6x36 EIPS, IWRC [58,800 lbs (26,672 kg) Minimum Breaking Strength]

Boom and Blocks

Boom Line Parts	5
Load Line Parts	6
Typical Hook Speed (HI/LO)	60/30 ft/min (18.3/9.1 m/min)

Hydraulic System

Directional Control Valve	3-Section, Open Center with Pilot Controls
Maximum Operating Pressure	4,000 psi (276 bar)

Weights

Total Hydraulic Conversion Kit	6,375 lb (2,892 kg)
--------------------------------	---------------------

HYDRAULIC CONVERSION KIT