



FEATURES

Multi-axis, hydraulic joystick allows simultaneous, precise control of the load and boom functions with one hand. Single lever, hydraulic remote control valves are used for counterweight and two-speed functions. The controls are easy to operate and require minimal operator training.

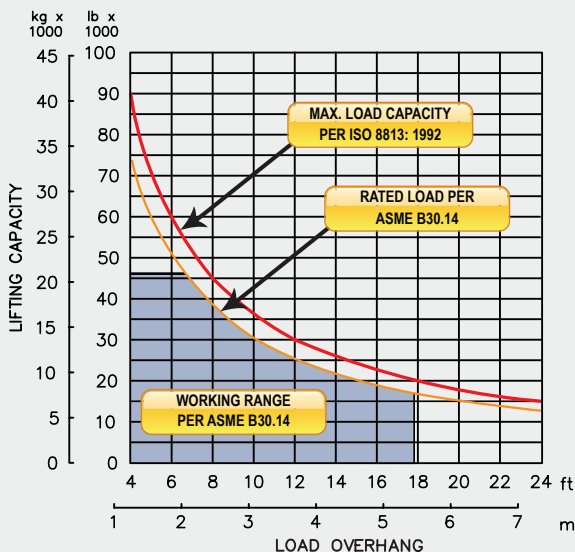
Hydraulic boom stop automatically prevents system over travel and damage to boom.

Free-Fall function on load winch.

Hydraulic Oil Cooler

Optional boom lengths and certified ROPS available.

LOAD RATING



SPECIFICATIONS

Load Capacity

Maximum Load Capacity at 4 ft Overhang	90,000 lb (40,824 kg)
Rated Load at 4 ft Overhang	76,500 lb (34,700 kg)
Maximum Working Load at 4 ft Overhang	47,600 lb (21,591 kg)

Winches

Boom Winch	Planetary, Two-Speed, Dual Brake System
Load Winch	Planetary, Two-Speed, Dual Brake System
Wire Rope Installed - Boom Winch	140 ft (42.7 m)
Maximum Cable Capacity - Boom Winch	242 ft (73.8 m)
Wire Rope Installed - Load Winch	160 ft (48.8 m)
Maximum Cable Capacity - Load Winch	423 ft (129 m)
Wire Rope - Boom & Load Line	3/4 in (19 mm), 6x36 EIPS, IWRC [58,800 lbs (26,672 kg) Minimum Breaking Strength]

Boom and Blocks

Boom Line Parts	4
Load Line Parts	4
Typical Hook Speed (HI/LO)	60/30 ft/min (18.3/9.1 m/min)

Hydraulic System

Directional Control Valve	3-Section, Open Center with Pilot Controls
Maximum Operating Pressure	4,000 psi (276 bar)

Weights

Total Hydraulic Conversion Kit	6,200 lb (2,812 kg)
--------------------------------	---------------------

HYDRAULIC CONVERSION KIT