



FEATURES

Three lever hydraulic control system allows simultaneous control of load and boom functions. The controls are easy to operate and require minimal operator training.

Hydraulic boom stop automatically prevents system over travel and damage to boom.

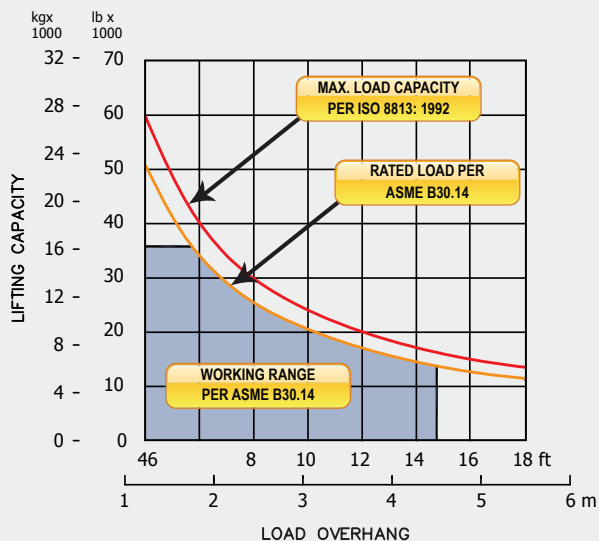
Free-Fall function on load winch.

Hydraulic Oil Cooler

Optional:

- Tubular A-Frame Boom
- Remote Hydraulic Pilot Controls
- Certified ROPS

LOAD RATING



SPECIFICATIONS

Load Capacity

Maximum Load Capacity at 4 ft overhang	60,000 lb (27,216 kg)
Rated Load at 4 ft overhang	51,000 lb (23,134 kg)
Maximum Working Load at 4 ft overhang	35,800 lb (16,239 kg)

Winches

Boom Winch	Planetary, Single-Speed, Dual Brake System
Load Winch	Planetary, Two-Speed, Dual Brake System
Wire Rope Installed - Boom Winch	130 ft (39.6 m)
Maximum Cable Capacity - Boom Winch	368 ft (112 m)
Wire Rope Installed - Load Winch	140 ft (42.7 m)
Maximum Cable Capacity - Load Winch	368 ft (112 m)
Wire Rope - Boom & Load Line	3/4 in (19 mm), 6x36 EIPS, IWRC [58,800 lbs (26,672 kg) Minimum Breaking Strength]

Boom and Blocks

Boom Line Parts	3
Load Line Parts	3
Typical Hook Speed (HI/LO)	70/35 ft/min (21.3/10.7 m/min)

Hydraulic System

Directional Control Valve	3-Section, Open Center with Manual Levers
Operating Pressure	3,000 psi (207 bar)

Weights

Total Hydraulic Conversion Kit	4,530 lb (2,055 kg)
--------------------------------	---------------------

HYDRAULIC CONVERSION KIT