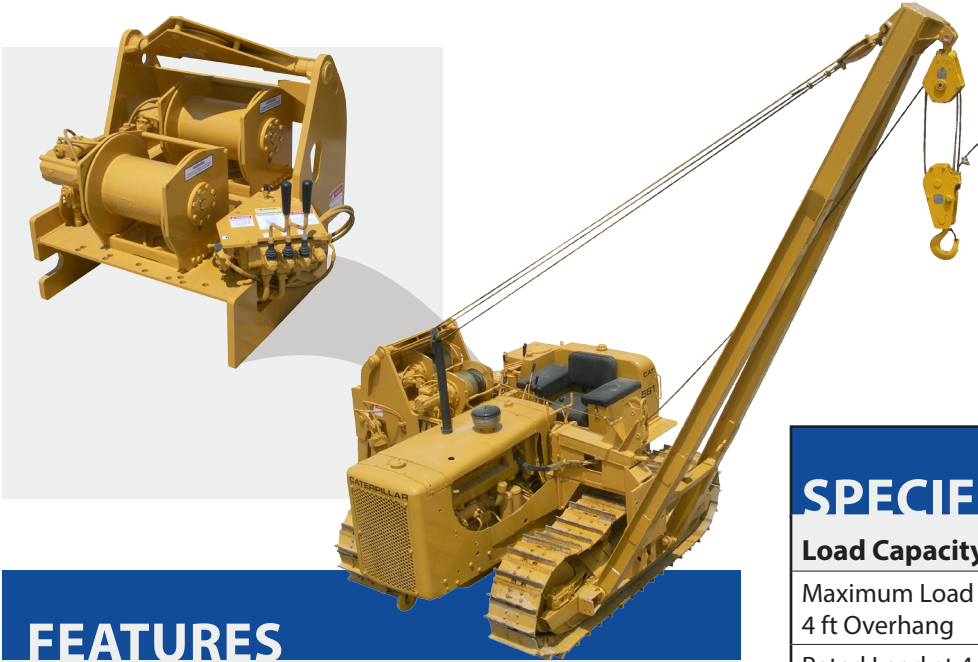


561 MMC Hydraulic Conversion Kit



FEATURES

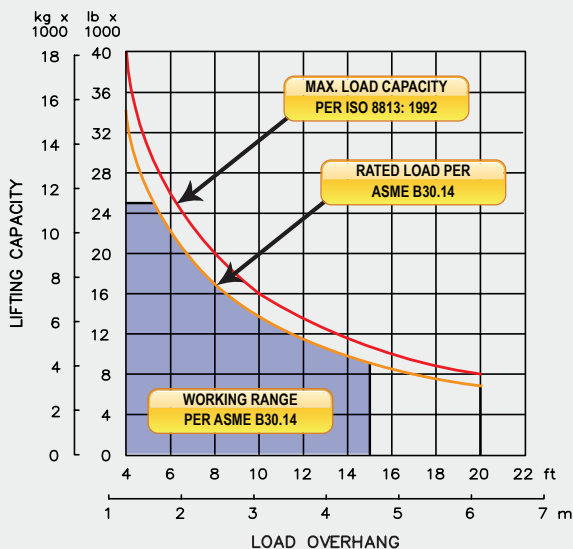
Three lever hydraulic control system allows simultaneous control of load and boom functions. The controls are easy to operate and require minimal operator training.

Hydraulic boom stop automatically prevents system over travel and damage to boom.

Optional:

- Tubular A-Frame Boom
- Remote Hydraulic Pilot Controls
- Extendible Hydraulic Counterweight
- Certified ROPS

LOAD RATING



SPECIFICATIONS

Load Capacity

Maximum Load Capacity at 4 ft Overhang	40,000 lb (18,144 kg)
Rated Load at 4 ft Overhang	34,000 lb (15,422 kg)
Maximum Working Load at 4 ft Overhang	25,000 lb (11,362 kg)

Winches

Boom Winch	Planetary, Single-Speed, Dual Brake System
Load Winch	Planetary, Two-Speed, Dual Brake System
Wire Rope Installed - Boom Winch	130 ft (39.6 m)
Maximum Cable Capacity - Boom Winch	368 ft (112 m)
Wire Rope Installed - Load Winch	130 ft (39.6 m)
Maximum Cable Capacity - Load Winch	368 ft (112 m)
Wire Rope - Boom & Load Line	5/8 in (16 mm), 6x36 EIPS, IWRC [41,200 lbs (18,688 kg) Minimum Breaking Strength]

Boom and Blocks

Boom Line Parts	3
Load Line Parts	3
Typical Hook Speed (HI/LO)	50/25 ft/min (15.2/7.6 m/min)

Hydraulic System

Directional Control Valve	3-Section, Open Center with Manual Levers
Maximum Operating Pressure	3,000 psi (207 bar)

Weights

Total Hydraulic Conversion Kit	3,550 lb (1,610 kg)
--------------------------------	---------------------

HYDRAULIC CONVERSION KIT